

# WYNDE FIVE ARRIVAL (RNAV) Arrival Route

EC-3, 26 JUN 2014 to 24 JUL 2014

## ARRIVAL DESCRIPTION

From WYNDE on track 253° to FIYER, then on track 253° to ERNINY, then on track 221° to PAPPI, then on track 221° to TUBEZ.

LANDING RWYS 4L/R, 9L/R, 14L/R, 22L/R, 27L/R, 28C/R, 32R:  
From TUBEZ on track 221° to VULCN, then on track 273° to KURKK, then on track 273° to BAMBB, expect radar vectors to final approach course. If not received by BAMBB, on track 273°.

LANDING RWYS 10L/C: From TUBEZ on track 197° to MONKZ, then on track 273° to JORJO, then on track 273° to POSSM, expect radar vectors to final approach course. If not received by POSSM, on track 273°.

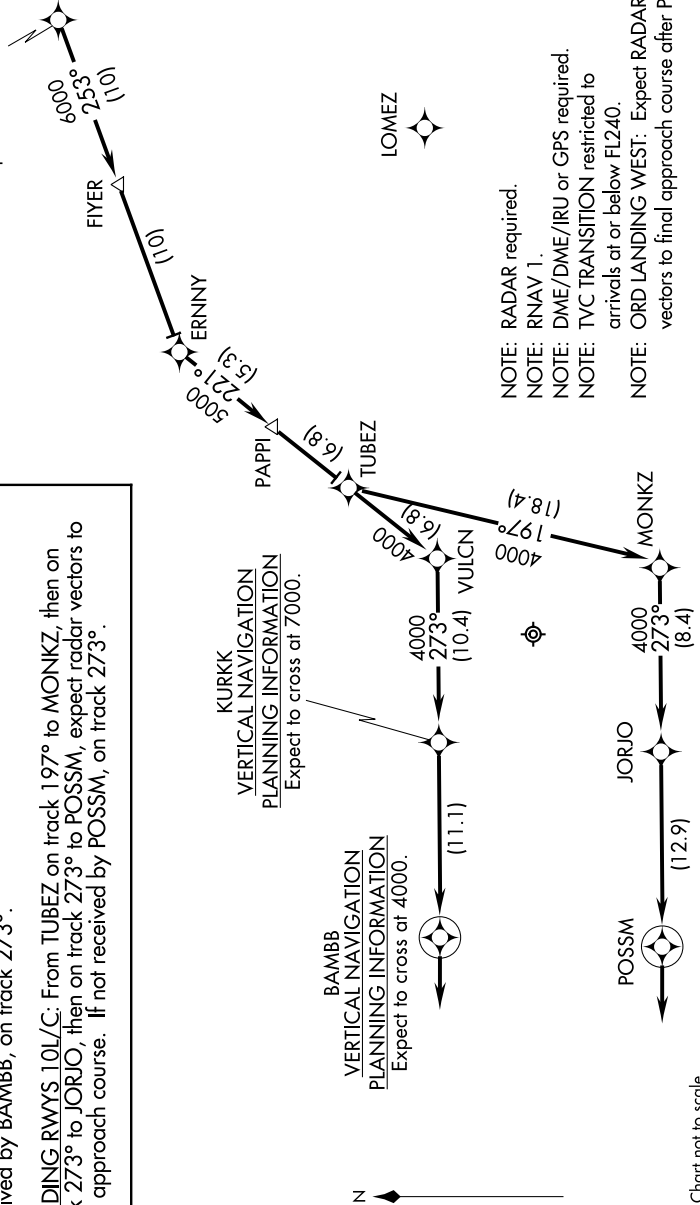
KURKK  
VERTICAL NAVIGATION  
PLANNING INFORMATION  
Expect to cross at 7000.

BAMBB  
VERTICAL NAVIGATION  
PLANNING INFORMATION  
Expect to cross at 4000.

POSSM  
JORJO  
MONKZ  
4000 (12.9)  
4000 (8.4)

CHICAGO APP CON  
119.0 393.1  
AITS  
135.4 282.225

WYNDE  
VERTICAL NAVIGATION  
PLANNING INFORMATION  
Expect to cross at 10000.



- NOTE: RADAR required.
- NOTE: RNAV 1.
- NOTE: DME/DME/IRU or GPS required.
- NOTE: TVC TRANSITION restricted to arrivals at or below FL240.
- NOTE: ORD LANDING WEST: Expect RADAR vectors to final approach course after PAPPI.

# WYNDE FIVE ARRIVAL (RNAV) Arrival Route

EC-3, 26 JUN 2014 to 24 JUL 2014