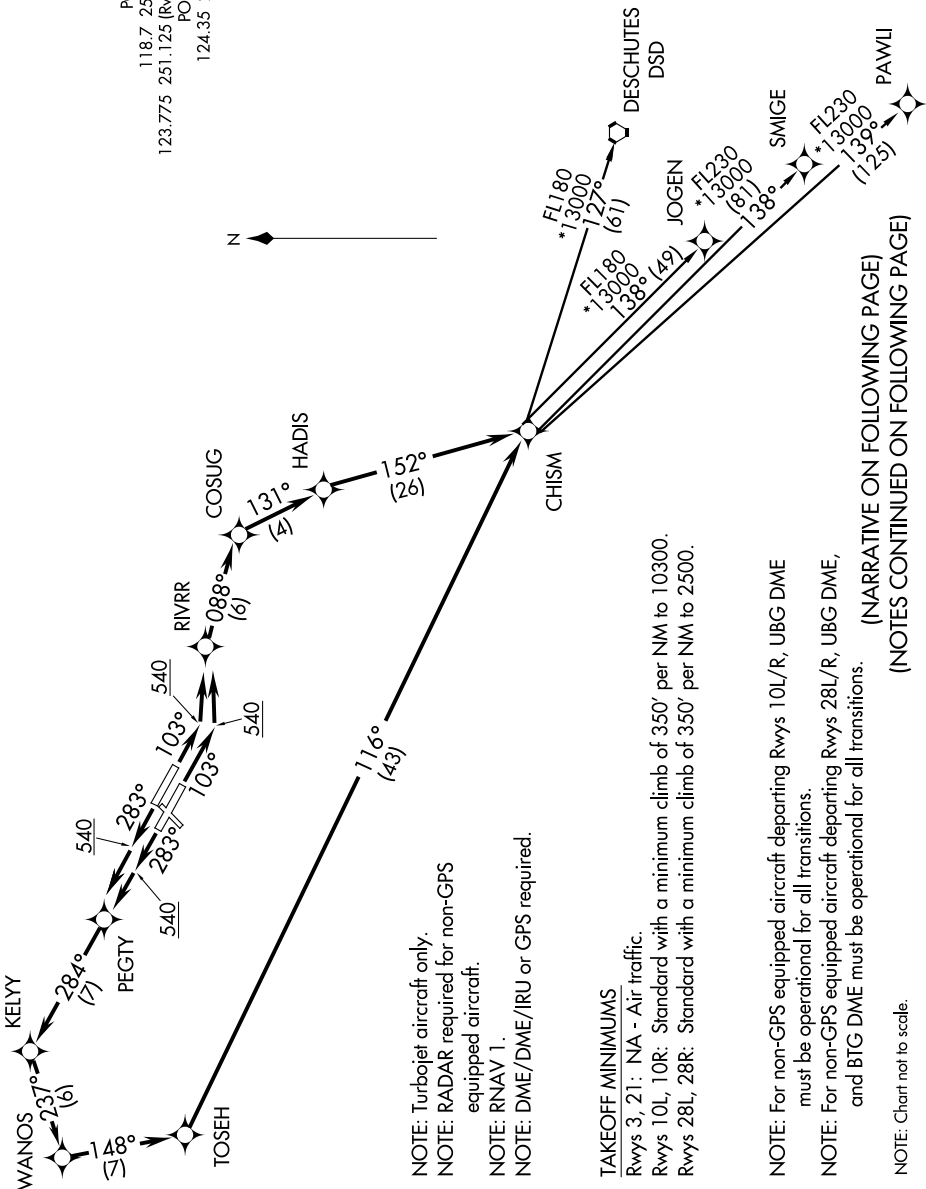


# CASCADE ONE DEPARTURE (RNAV)

ATIS 128.35 269.9  
 CLNC DEL 120.125 318.1  
 GND CON 121.9 348.6  
 PORTLAND TOWER 121.9 348.6  
 118.7 257.8 (Rwy 10L-28R)  
 123.775 251.125 (Rwys 3-21, 10R-28L)  
 PORTLAND DEP CON 124.35 299.2 (280°-099°)

NW-1, 26 JUN 2014 to 24 JUL 2014



NOTE: Turbojet aircraft only.  
 NOTE: RADAR required for non-GPS equipped aircraft.  
 NOTE: RNAV 1.  
 NOTE: DME/DME/IRU or GPS required.

NOTE: For non-GPS equipped aircraft departing Rwy 10L/R, UBG DME must be operational for all transitions.  
 NOTE: For non-GPS equipped aircraft departing Rwy 28L/R, UBG DME, and BTG DME must be operational for all transitions.

NOTE: Chart not to scale.

(NARRATIVE ON FOLLOWING PAGE)  
(NOTES CONTINUED ON FOLLOWING PAGE)