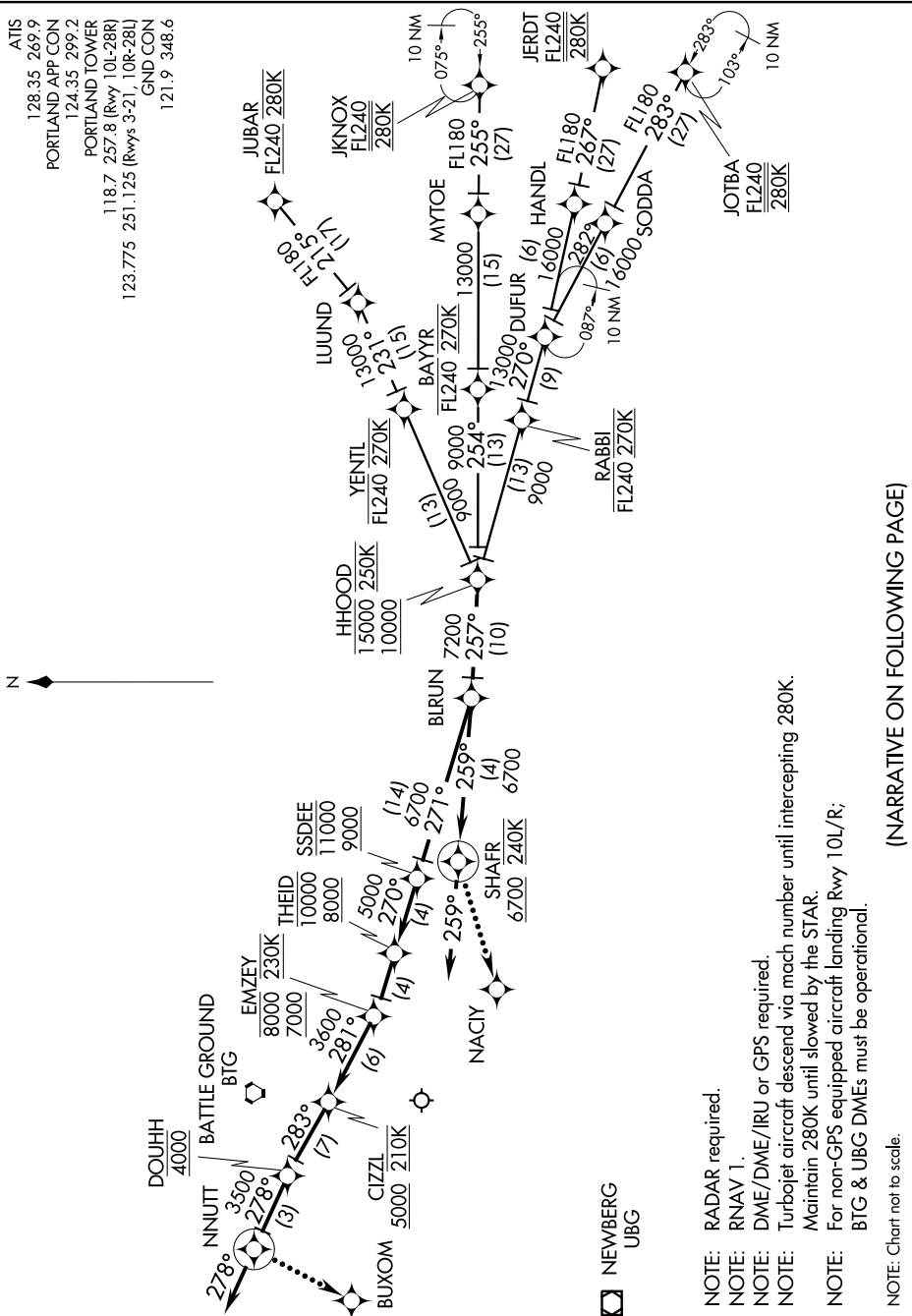


HHOOD TWO ARRIVAL (RNAV)

ATIS
128.35 269.9
PORTLAND APP CON
124.35 299.2
PORTLAND TOWER
118.7 257.8 (Rwy 10L-28R)
123.775 251.125 (Rwys 3-21, 10R-28L)
GND CON
121.9 348.6

NW-1, 26 JUN 2014 to 24 JUL 2014



- NOTE: RADAR required.
- NOTE: RNAV 1.
- NOTE: DME/DME/IRU or GPS required.
- NOTE: Turbojet aircraft descend via mach number until intercepting 280K.
- NOTE: Maintain 280K until slowed by the STAR.
- NOTE: For non-GPS equipped aircraft landing Rwy 10L/R; BTG & UBG DMEs must be operational.
- NOTE: Chart not to scale.

(NARRATIVE ON FOLLOWING PAGE)

NW-1, 26 JUN 2014 to 24 JUL 2014