

PORTLAND, OREGON

HI-ILS or LOC/DME RWY 10R

LOC/DME I-PDX 110.5 Chan 42	APCH CRS 103°	Rwy ldg 11,000 THRE 23 Arpt Elev 31
---	-------------------------	--

JAL-330 [USAF]

PORTLAND INTL (KPDJ)

▼ * When ALS inop, increase RVR to 40 and vis to 3/4 mile.
 ** When ALS inop, increase CAT CDE RVR to 60 and vis to 1 1/8 miles.

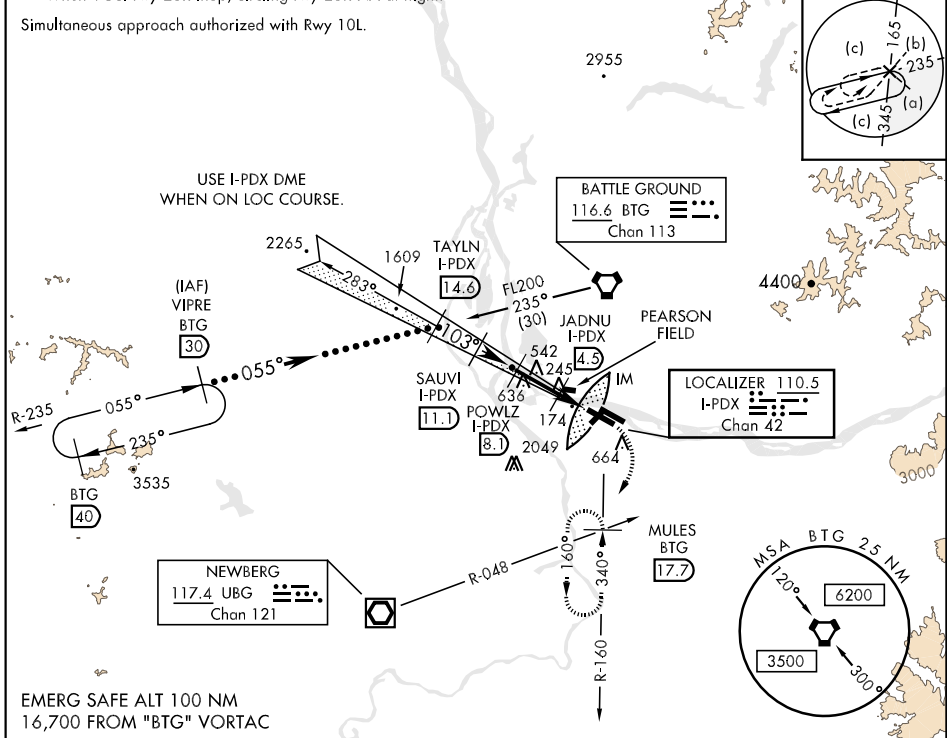
ALSF-2

MISSED APPROACH: Climb to 1100 then climbing right turn to 5000 on BTG VORTAC R-160 to MULES/BTG 17.7 DME and hold, continue climb-in-hold to 5000.

ATIS 128.35 269.9	PORTLAND APP CON 124.35 299.2	PORTLAND TOWER 118.7 257.8 Rwy 10L-28R 123.775 251.125 Rwy 3-21, 10R-28L	GND CON 121.9 348.6	CLNC DEL 120.125 318.1
-----------------------------	---	--	-------------------------------	----------------------------------

*** When VGSJ rwy 28R inop, circling rwy 28R NA at night.

Simultaneous approach authorized with Rwy 10L.



NW-1, 26 JUN 2014 to 24 JUL 2014

NW-1, 26 JUN 2014 to 24 JUL 2014

EMERG SAFE ALT 100 NM
16,700 FROM "BTG" VORTAC

VIPRE BTG 30	TAYLN I-PDX 14.6	SAUVI I-PDX 11.1	POWLZ I-PDX 8.1	JADNU I-PDX 4.3	I-PDX 3.1	I-PDX 2	I-PDX DME	
FL200	3800	2900	2000	860+	3.6 NM	2.4 NM	.1	
1100	5000	MULES BTG 17.7	ELEV 31					THRE 23
VGSJ and ILS glidepath not coincident.	GS 3.00° TCH 53	103° 6.0 NM from FAF	424 ±					
† LOC ONLY								
CATEGORY	C	D	E					
S-ILS 10R*	223/18	200	(200-3/8)					
S-LOC/DME 10R**	440/40	417	(500-3/4)					
CIRCLING***	760-2 729 (800-2)	980-3 949 (1000-3)	1140-3 1109 (1200-3)					

PORTLAND, OREGON
Amdt 7B 18OCT12

45°35'N-122°36'W

PORTLAND INTL (KPDJ)

HI-ILS or LOC/DME RWY 10R