

LOC/DME I-VDG 111.3 Chan 50	APP CRS 103°	Rwy Idg 8535 TDZE 30 Apt Elev 31
---	------------------------	---

ILS or LOC RWY 10L

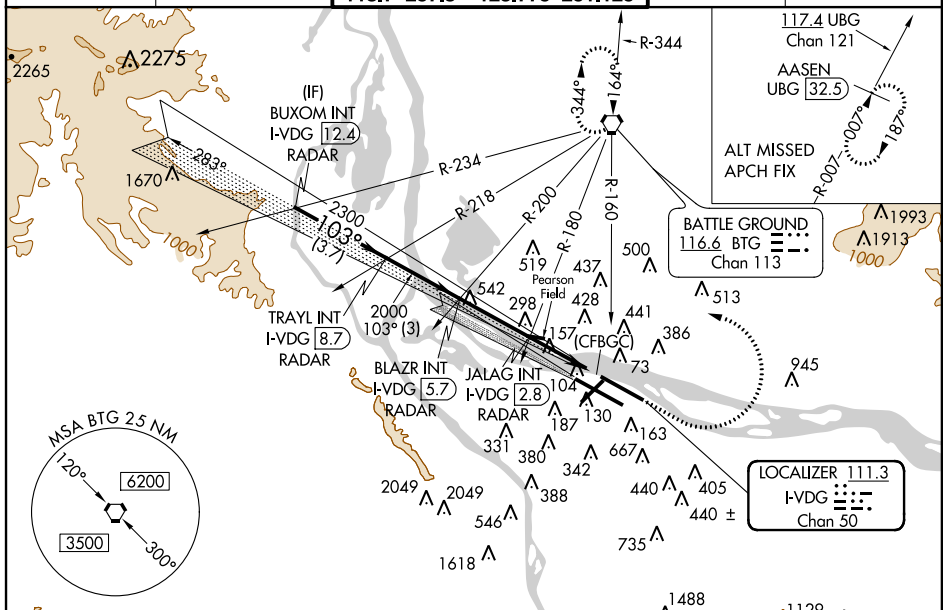
PORTLAND INTL (PDX)

⚠ Simultaneous approach authorized with Rwy 10R. For inoperative MALSR, increase S-ILS visibility all Cats to RVR 4500. S-LOC Cat E visibility to RVR 6000. ** RVR 2000 authorized with use of flight director or autopilot or HUD to DA. RADAR or DME required.

MALSR
AS

MISSED APPROACH: Climb to 800 then climbing left turn to 4200 on BTG VORTAC R-160 to BTG VORTAC and hold, continue climb-in-hold to 4200.

ATIS 128.35 269.9	PORTLAND APP CON 124.35 299.2	PORTLAND TOWER Rwy 10L-28R Rws 3-21, 10R-28L 118.7 257.8 123.775 251.125	GND CON 121.9 348.6	CLNC DEL 120.125 318.1
-----------------------------	---	---	-------------------------------	----------------------------------

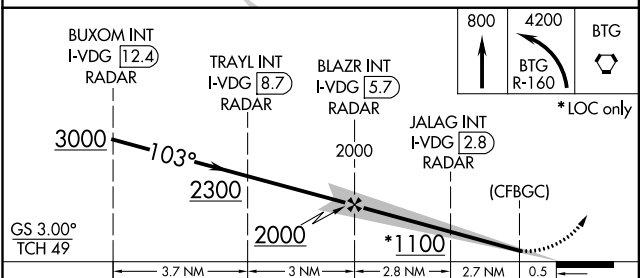
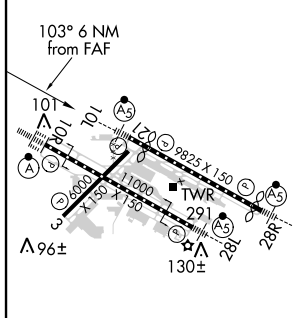


NW-1, 26 JUN 2014 to 24 JUL 2014

NW-1, 26 JUN 2014 to 24 JUL 2014

ELEV 31	D	TDZE 30
---------	----------	---------

RADAR REQUIRED



REIL Rws 3 and 21
TDZ/CL Rwy 10R
MIRL Rwy 3-21
HIRL Rws 10L-28R and 10R-28L
FAF to MAP 5.6 NM

Knots	60	90	120	150	180
Min:Sec	5:36	3:44	2:48	2:14	1:52

CATEGORY	A	B	C	D	E
S-ILS 10L**	293/24 263 (300-½)				
S-LOC 10L	420/24 390 (400-½)		420/35 390 (400-¾)		
CIRCLING	720-1 689 (700-1)	740-1 709 (800-1)	760-2 729 (800-2)	980-3 949 (1000-3)	1140-3 1109 (1200-3)