

LAVAA FIVE DEPARTURE (RNAV)

NW-1, 26 JUN 2014 to 24 JUL 2014

NOTE: For non-GPS equipped aircraft departing Rwy 10L, 10R UBG and BTG DMEs must be operational for the Pendleton and Yakima Transition.

NOTE: For non-GPS equipped aircraft departing Rwy 28L LTJ DME must be operational for the Pendleton and Yakima Transition.

TAKEOFF MINIMUMS

Rwys 3, 21: NA - Air traffic.

Rwys 10R, 10L: Standard with minimum climb of 220' per NM to 5300, ATC climb of 350' per NM to 3300, then ATC climb of 320' per NM to FL190.

Rwys 28R, 28L: Standard with minimum climb of 240' per NM to 6100, ATC climb of 350' per NM to 2500, then ATC climb of 300' per NM to FL190.

TAKEOFF OBSTACLE NOTES

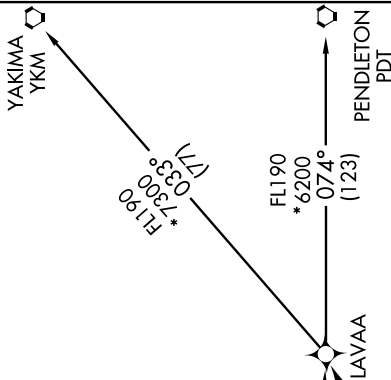
Rwy 10L: Vehicles on road beginning abeam DER, 376' left of centerline, up to 15' AGL/78' MSL. Trees beginning 1201' from DER, 753' right of centerline, up to 75' AGL/95' MSL.

Rwy 10R: Pole 1996' from DER, 759' right of centerline, 54' AGL/74' MSL.

Rwy 28L: Trees 1873' from DER, 837' left of centerline, up to 75' AGL/95' MSL.

Rwy 28R: Building, antennas, vehicles on road beginning 130' from DER, 257' right of centerline, 27' AGL/58' MSL.

ATIS
128.35 269.9
CLNC DEL
120.125 318.1
PORTLAND TOWER
118.7 257.8 (Rwy 10L-28R)
123.775 251.125 (Rwys 3-21, 10R-28L)
124.35 299.2 (280°-099°)



NOTE: RADAR required for non-GPS equipped aircraft.

NOTE: DME/DME/IRU or GPS required.

NOTE: RNAV 1.

NOTE: Turbojet aircraft only.

(NARRATIVE ON FOLLOWING PAGE)

NOTE: Chart not to scale.

LAVAA FIVE DEPARTURE (RNAV)

NW-1, 26 JUN 2014 to 24 JUL 2014