


APP CRS	Rwy Idg	11000
283°	TDZE	23
	Apt Elev	31

RNAV (RNP) Y RWY 28L

PORTLAND INTL (PDX)

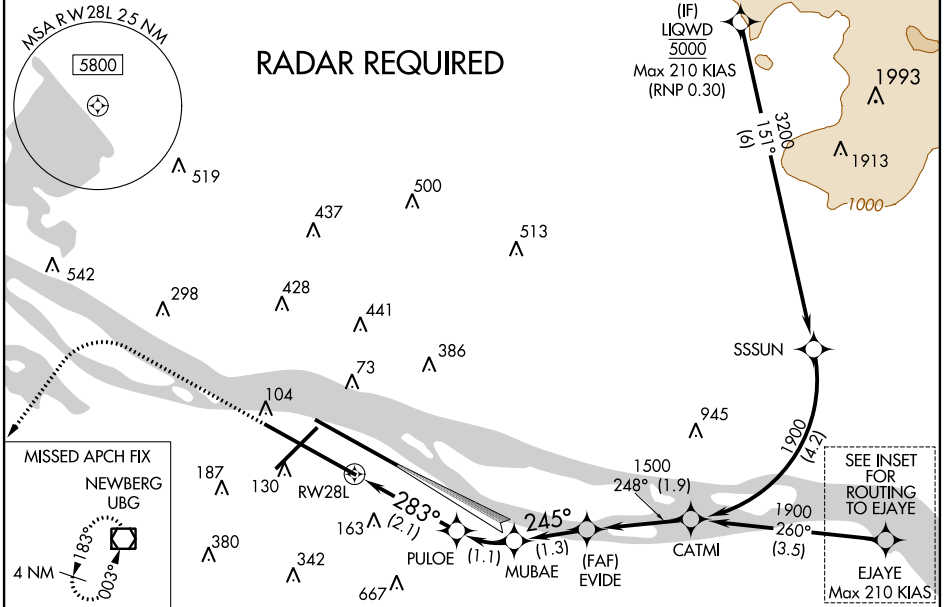
▼ For uncompensated Baro-VNAV systems, procedure NA below -6°C (22°F) or above 54°C (130°F). For inop MALS, increase RNP 0.23 all Cats visibility to RVR 5600 and increase RNP 0.30 all Cats visibility to 1½ mile. Simultaneous approach authorized with Rwy 28R. RF required. GPS required. Use of FD or AP providing RNAV track guidance required during simultaneous operations.

MALS



MISSED APPROACH: Climb to 2100 then climbing left turn to 4000 direct UBG VOR/DME and hold.

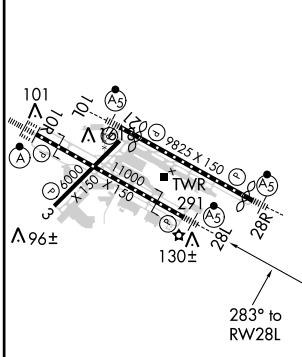
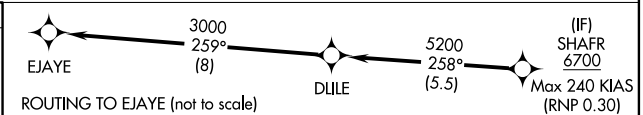
ATIS	PORTLAND APP CON	PORTLAND TOWER	GND CON	CLNC DEL
128.35 269.9	124.35 299.2	Rwy 10L-28R Rlys 3-21, 10R-28L 118.7 257.8 123.775 251.125	121.9 348.6	120,125 318.1



NW-1, 26 JUN 2014 to 24 JUL 2014

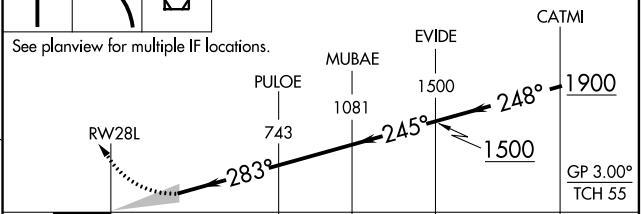
NW-1, 26 JUN 2014 to 24 JUL 2014

ELEV	31	D	TDZE	23
------	-----------	----------	------	-----------



2100 4000 UBG

VGSI and RNAV glidepath not coincident (VGSI Angle 3.00/TCH 72).



CATEGORY	A	B	C	D
RNP 0.23 DA		370/33	347 (400-¾)	
RNP 0.30 DA		474/53	451 (500-1¼)	

MIRL Rwy 3-21
TDZ/CL Rwy 10R
REIL Rlys 3 and 21
HIRL Rlys 10L-28R and 10R-28L

AUTHORIZATION REQUIRED