


APP CRS	Rwy Idg	9290
283°	TDZE	31
	Apt Elev	31

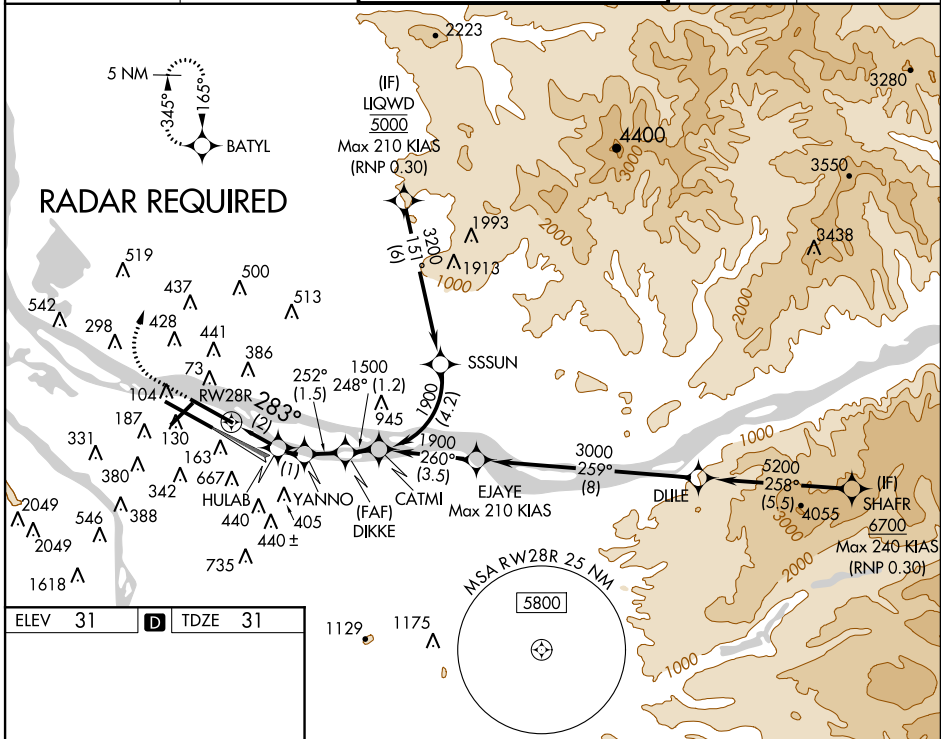
RNAV (RNP) Y RWY 28R

PORTLAND INTL (PDX)

▼ For uncompensated Baro-VNAV systems, procedure NA below -6°C (22°F) or above 54°C (130°F). For inop MALS, increase RNP 0.20 all Cats visibility to 1 1/4 mile, and increase RNP 0.30 all Cats visibility to 1 3/8 mile. RF required. GPS required. Night Landing Cats C/D Rwy 28R operational VGSi required, remain on or above VGSi glidepath until threshold. Use of FD or AP providing RNAV track guidance required during simultaneous operations. Simultaneous approach authorized with Rwy 28L.

MALS
 MISSED APPROACH:
 Climb to 600 then climbing right turn to 4400 direct BATYL and hold, continue climb-in-hold to 4400.

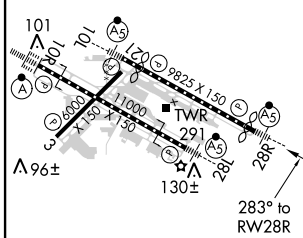
ATIS	PORTLAND APP CON	PORTLAND TOWER	GND CON	CLNC DEL
128.35 269.9	124.35 299.2	Rwy 10L-28R 118.7 257.8 Rwys 3-21, 10R-28L 123.775 251.125	121.9 348.6	120.125 318.1



NW-1, 26 JUN 2014 to 24 JUL 2014

NW-1, 26 JUN 2014 to 24 JUL 2014

ELEV	31	D	TDZE	31
------	----	----------	------	----



600	4400	BATYL	VGSi and RNAV glidepath not coincident (VGSi Angle 3.00°/TCH 70).
See planview for multiple IF locations.		DIKKE	CATMI
RW28R		HULAB	YANNO
283°		722	1034
252°		1500	1900
248°		1500	GP 3.00°
283° to RW28R			TCH 54
2 NM		1 NM	1.5 NM
		1.2 NM	

CATEGORY	A	B	C	D
RNP 0.20 DA		401/50	370 (400-1)	
RNP 0.30 DA		453/50	422 (500-1)	

REIL Rwys 3 and 21
 TDZ/CL Rwy 10R
 MIRL Rwy 3-21
 HIRL Rwys 10L-28R and 10R-28L

AUTHORIZATION REQUIRED