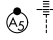


APP CRS	Rwy Idg	11000
283°	TDZE	23
	Apt Elev	31

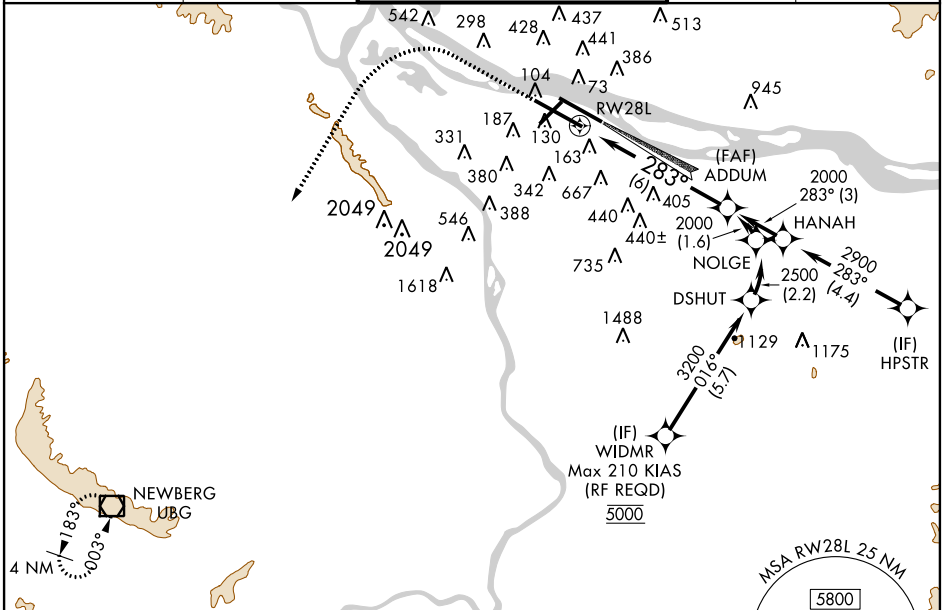
RNAV (RNP) Z RWY 28L

PORTLAND INTL (PDX)

▼ For uncompensated Baro-VNAV systems, procedure NA below -15°C (5°F) or above 54°C (130°F). For inoperative MALS, increase RNP 0.27 all Cats visibility to RVR 6000 and increase RNP 0.30 all Cats visibility to 1 1/2 mile. Simultaneous approach authorized with Rwy 28R. GPS Required. Use of FD or AP providing RNAV track guidance required during simultaneous operations.

MALS
 MISSED APPROACH: Climb to 2100 then climbing left turn to 4000 direct UBG VOR/DME and hold.

ATIS 128.35 269.9	PORTLAND APP CON 124.35 299.2	PORTLAND TOWER Rwy 10L-28R 118.7 257.8	Rwys 3-21, 10R-28L 123.775 251.125	GND CON 121.9 348.6	CLNC DEL 120.125 318.1
-----------------------------	---	---	--	-------------------------------	----------------------------------



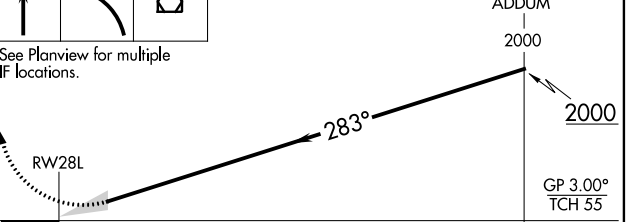
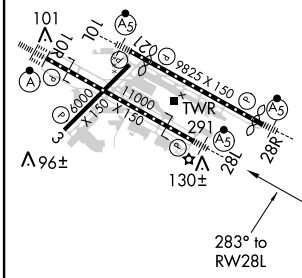
NW-1, 26 JUN 2014 to 24 JUL 2014

NW-1, 26 JUN 2014 to 24 JUL 2014

ELEV 31	D	TDZE 23
---------	----------	---------

RADAR REQUIRED

2100 4000 UBG VGS1 and RNAV glidepath not coincident (VGS1 Angle 3.00/TCH 72).



REIL Rwys 3 and 21
 TDZ/CL Rwy 10R
 MIRL Rwy 3-21
 HIRL Rwys 10L-28R and 10R-28L

CATEGORY	A	B	C	D
RNP 0.27 DA		374/35	351 (400-3/4)	
RNP 0.30 DA		494/60	471 (500-1/4)	

AUTHORIZATION REQUIRED