


APP CRS	Rwy Idg	9290
283°	THRE	31
	Apt Elev	31

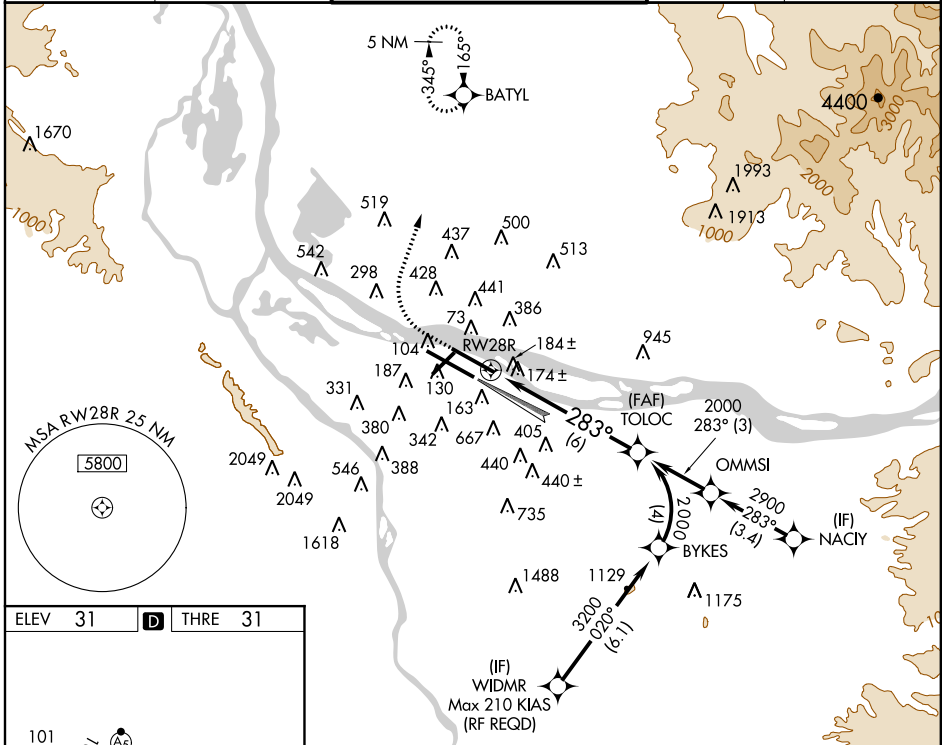
RNAV (RNP) Z RWY 28R

PORTLAND INTL (PDX)

▼ For uncompensated Baro-VNAV systems, procedure NA below -6°C (22°F) or above 54°C (130°F). Simultaneous approach authorized with Rwy 28L. Radar required. GPS required. Use of FD or AP providing RNAV track guidance required during simultaneous operations. Procedure NA at night. For inoperative MALS R increase RNP 0.20 all Cats visibility to 1½ mile, and increase RNP 0.30 all Cats visibility to 1½ mile.

MALS R  MISSED APPROACH: Climb to 600 then climbing right turn to 4400 direct BATYL and hold, continue climb-in-hold to 4400.

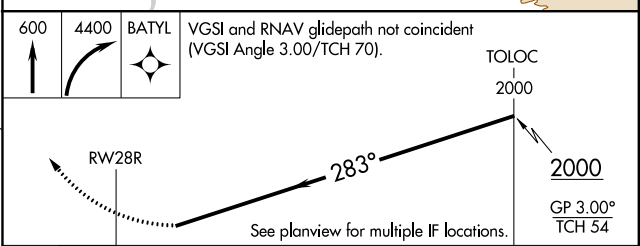
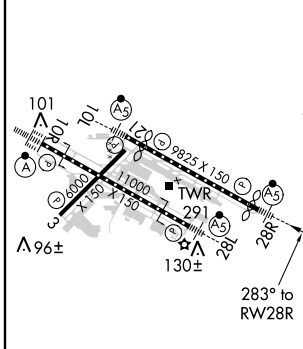
ATIS	PORTLAND APP CON	PORTLAND TOWER	GND CON	CLNC DEL
128.35 269.9	124.35 299.2	Rwy 10L-28R 118.7 257.8 Rwys 3-21, 10R-28L 123.775 251.125	121.9 348.6	120.125 318.1



NW-1, 26 JUN 2014 to 24 JUL 2014

NW-1, 26 JUN 2014 to 24 JUL 2014

ELEV 31	D	THRE 31
---------	----------	---------



CATEGORY	A	B	C	D
RNP 0.20 DA	417/40	386 (400-¾)	417/50	386 (400-1)
RNP 0.30 DA	471/50 440 (500-1)			

AUTHORIZATION REQUIRED