


WAAS CH 56205 W28B	APP CRS 283°	Rwy Idg TDZE 11000 23 Apt Elev 31
--	------------------------	--

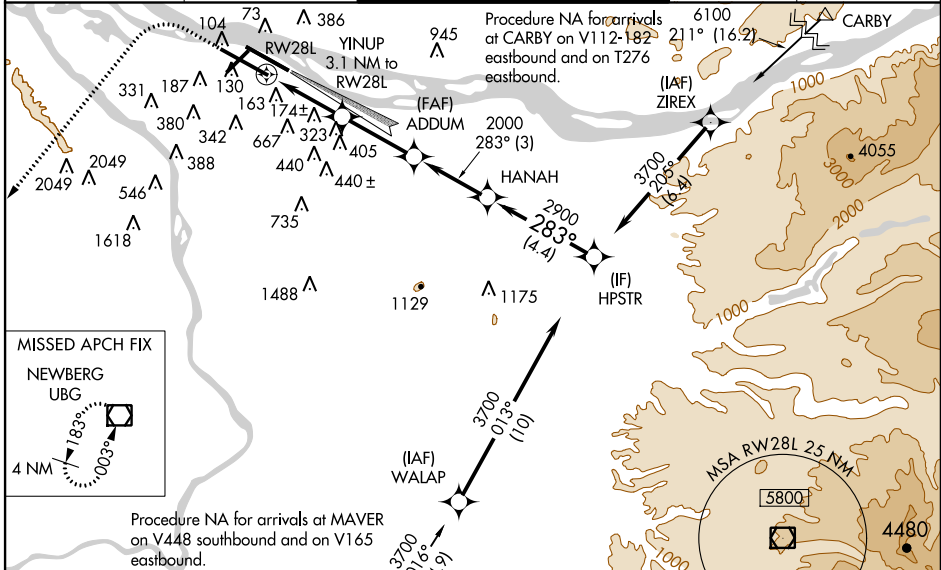
RNAV (GPS) X RWY 28L

PORTLAND INTL (PDX)

⚠ For uncompensated Baro-VNAV systems, LNAV/VNAV NA below -15°C (5°F) or above 54°C (130°). For inoperative MALS/R, increase LPV all Cats visibility to RVR 4500 and increase LNAV/VNAV all Cats visibility to 1 1/8 mile and increase LNAV Cats A, B visibility to RVR 5500. DME/DME RNP-0.3 NA. Simultaneous approach authorized with Rwy 28R. Use of FD or AP providing RNAV track guidance required during simultaneous operations. LNAV procedure NA during simultaneous operations.

MALS/R
 MISSED APPROACH: Climb to 2100, then climbing left turn to 4000 direct UBG VOR/DME and hold.

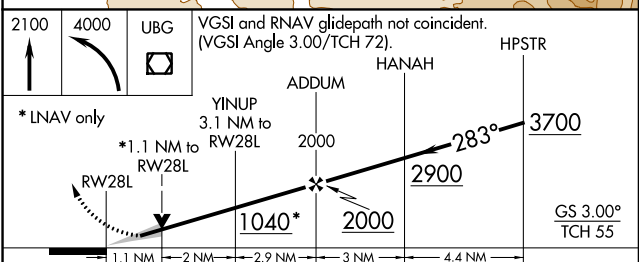
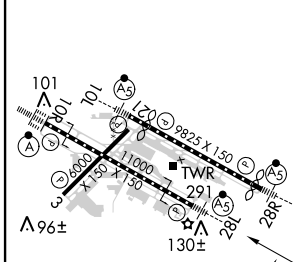
ATIS 128.35 269.9	PORTLAND APP CON 124.35 299.2	PORTLAND TOWER Rwy 10L-28R 118.7 257.8 Rwys 3-21, 10R-28L 123.775 251.125	GND CON 121.9 348.6	CLNC DEL 120.125 318.1
-----------------------------	---	---	-------------------------------	----------------------------------



NW-1, 26 JUN 2014 to 24 JUL 2014

NW-1, 26 JUN 2014 to 24 JUL 2014

ELEV 31	D	TDZE 23
---------	----------	---------



CATEGORY	A	B	C	D
LPV DA		309/24	286 (300-1/2)	
LNAV/VNAV DA		507-1 1/8	484 (500-1 1/8)	
LNAV MDA	440/24	417 (500-1/2)	440/40	417 (500-3/4)
CIRCLING	720-1 689 (700-1)	740-1 709 (800-1)	760-2 729 (800-2)	980-3 949 (1000-3)