


WAAS CH 60905 W28A	APP CRS 283°	Rwy Idg 9290 TDZE 31 Apt Elev 31
---------------------------------	------------------------	---

RNAV (GPS) X RWY 28R

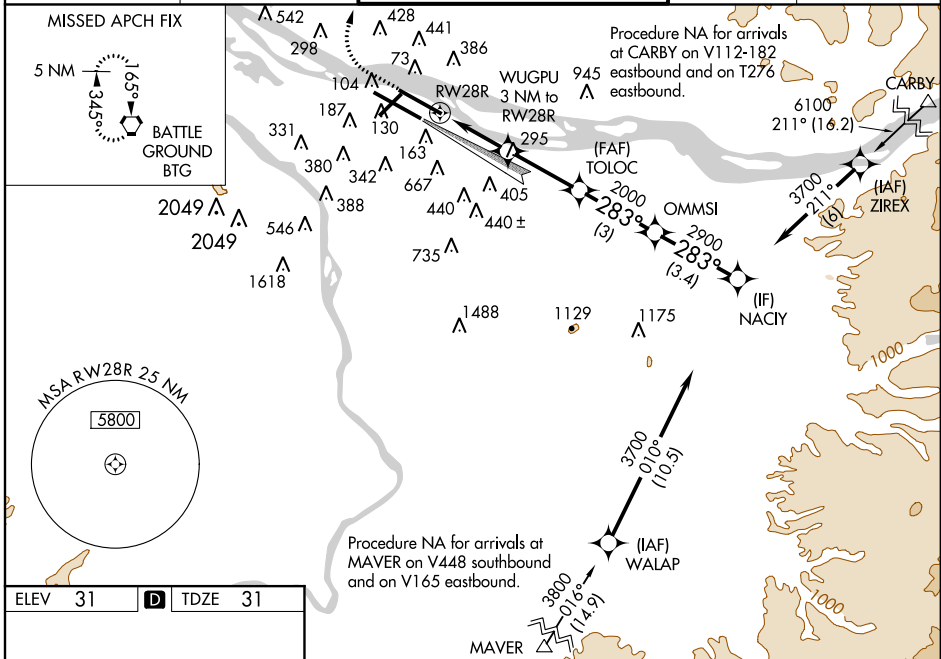
PORTLAND INTL (PDX)

⚠ For uncompensated Baro-VNAV systems, LNAV/VNAV NA below -15°C (5°F) or above 54°C (130°F). Inoperative table does not apply to LPV all Cats and LNAV Cats A/B. When VGSI inop, Straight-in/Circling Rwy 28R procedure NA at night. For inoperative MALSR, increase LNAV/VNAV all Cats visibility to 1½ mile. DME/DME RNP-0.3 NA. Helicopter visibility reduction below 1 SM NA. Simultaneous approach authorized with Rwy 28L. Use of FD or AP providing RNAV track guidance required during simultaneous operations. LNAV procedure NA during simultaneous operations.

MALSR 

MISSED APPROACH: Climb to 600 then climbing right turn to 4200 direct BTG VORTAC and hold, continue climb-in-hold to 4200.

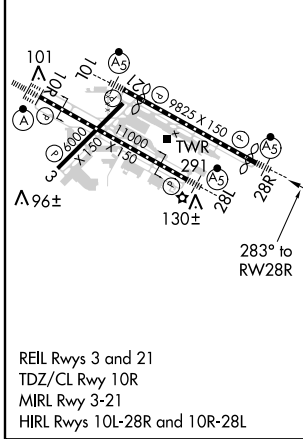
ATIS 128.35 269.9	PORTLAND APP CON 124.35 299.2	PORTLAND TOWER Rwy 10L-28R 118.7 257.8 Rwys 3-21, 10R-28L 123.775 251.125	GND CON 121.9 348.6	CLNC DEL 120.125 318.1
-----------------------------	---	---	-------------------------------	----------------------------------



NW-1, 26 JUN 2014 to 24 JUL 2014

NW-1, 26 JUN 2014 to 24 JUL 2014

ELEV 31	D	TDZE 31
---------	----------	---------



CATEGORY	A	B	C	D
LPV DA	281/50		250 (300-1)	
LNAV/VNAV DA	482/52		451 (500-1¼)	
LNAV MDA	560/50	529 (600-1)	560/55	529 (600-1¼)
CIRCLING	720-1 689 (700-1)	740-1 709 (800-1)	760-2 729 (800-2)	980-3 949 (1000-3)