

PORTLAND, OREGON

# TACAN RWY 28L

TACAN CBU Chan <b>29</b>	APCH CRS <b>275°</b>	Rwy ldg <b>11,000</b> TDZE <b>23</b> Arpt Elev <b>31</b>
-----------------------------	-------------------------	--

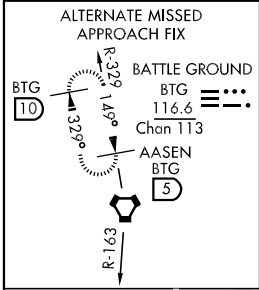
AL-330 [USAF]

PORTLAND INTL (KPDJ)

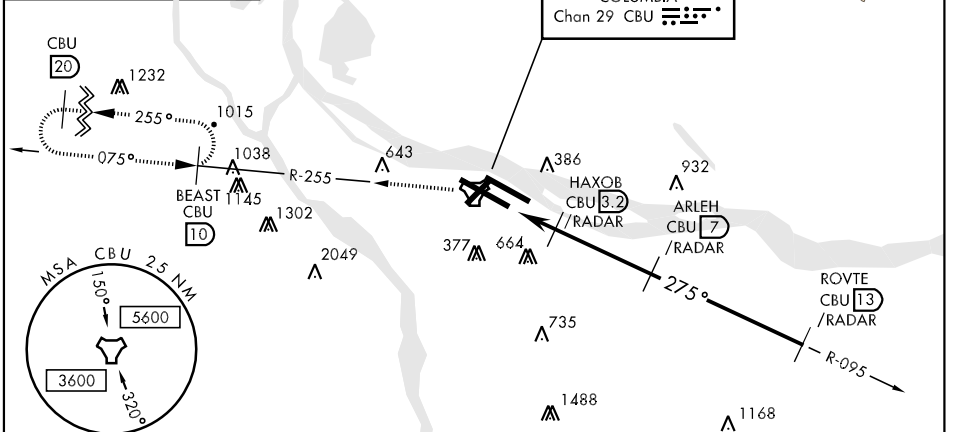
▼ \*When ALS inop, increase CAT AB RVR to 50 and vis to 1 mile, CAT C vis to 1½ miles, CAT D vis to 1¾ miles, CAT E vis to 2 miles.  
 \*\*When VGSI rwy 28R inop, circling rwy 28R NA at night.

⬆ MISSED APPROACH: Climbing left turn to 4000 via CBU TACAN R-255 to EAST INT/ CBU 10 DME and hold or when directed by ATC.

ATIS <b>128.35 269.9</b>	PORTLAND APP CON <b>124.35 299.2</b>	PORTLAND TOWER <b>118.7 257.8</b> Rwy 10L-28R <b>123.775 251.125</b> Rwy 3-21, 10R-28L	GND CON <b>121.9 348.6</b>	CLNC DEL <b>120.125 318.1</b>
-----------------------------	---	--	-------------------------------	----------------------------------



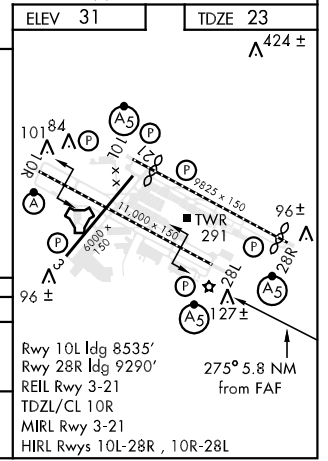
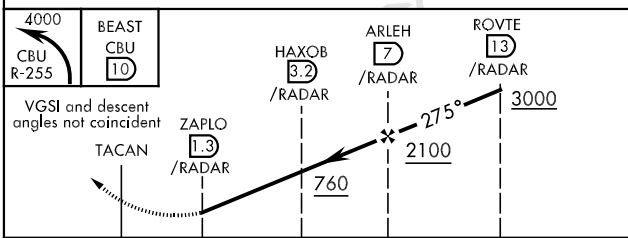
† ALTERNATE MISSED APPROACH: Climb to 4300 via BTG VORTAC R-163 to BTG then via BTG R-329 to AASEN INT and hold.



NW-1, 26 JUN 2014 to 24 JUL 2014

NW-1, 26 JUN 2014 to 24 JUL 2014

## RADAR REQUIRED



CATEGORY	A	B	C	D	E
S-28L*	600/24 577 (600-½)		600/50 577 (600-1)	600/60 577 (600-1¼)	600-1½ 577 (600-1½)
CIRCLING**	720-1 689 (700-1)	740-1 709 (800-1)	760-2 729 (800-2)	1000-3 969 (1000-3)	1160-3 1129 (1200-3)

PORTLAND, OREGON  
Amdt 1 18OCT12

45°35'N-122°36'W

PORTLAND INTL (KPDJ)

# TACAN RWY 28L