

# TMBRS ONE ARRIVAL (RNAV) Transition Routes

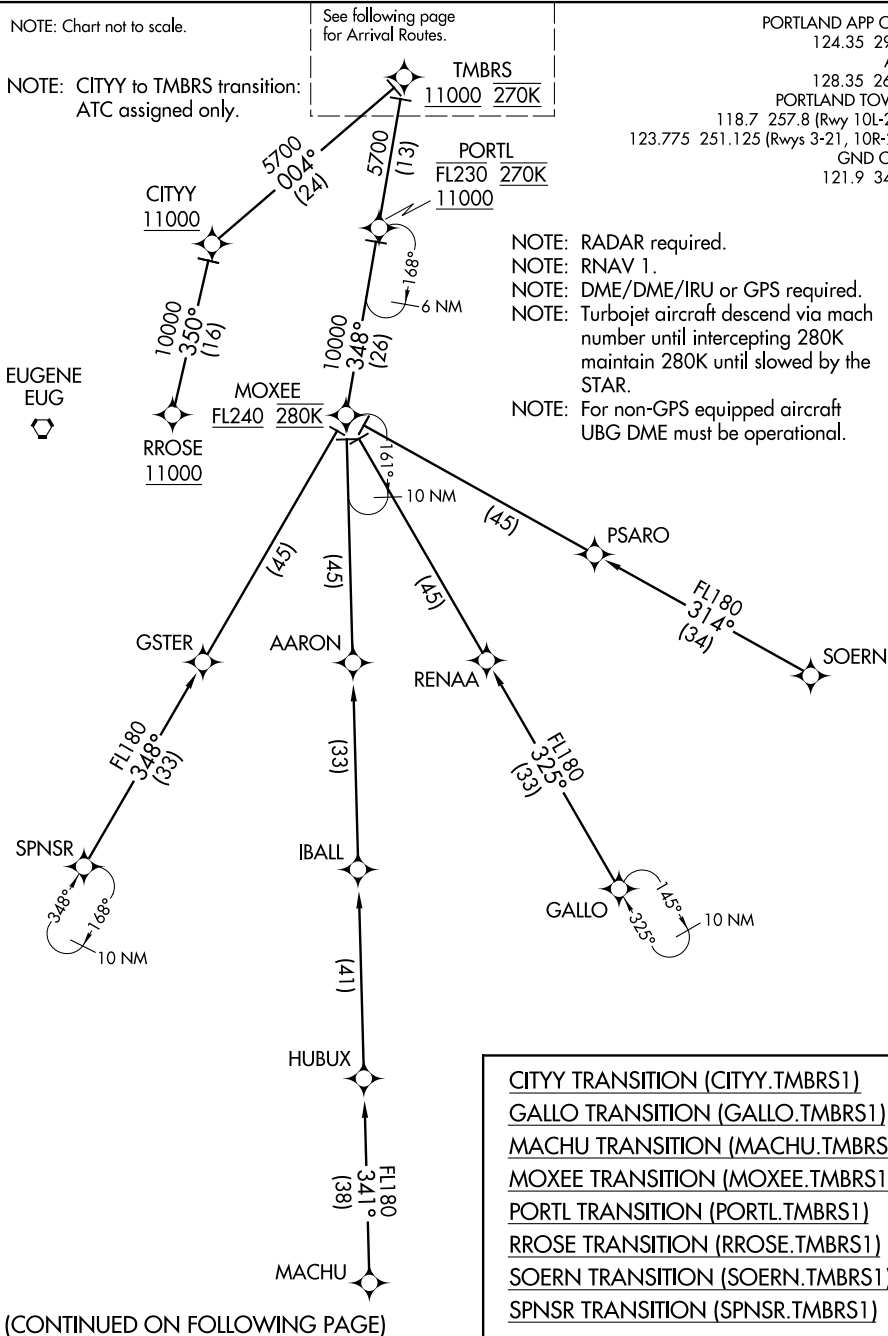
NOTE: Chart not to scale.

See following page  
for Arrival Routes.

NOTE: CITYY to TMBRS transition:  
ATC assigned only.

PORTLAND APP CON  
124.35 299.2  
ATIS  
128.35 269.9  
PORTLAND TOWER  
118.7 257.8 (Rwy 10L-28R)  
123.775 251.125 (Rwys 3-21, 10R-28L)  
GND CON  
121.9 348.6

NOTE: RADAR required.  
NOTE: RNAV 1.  
NOTE: DME/DME/IRU or GPS required.  
NOTE: Turbojet aircraft descend via mach number until intercepting 280K maintain 280K until slowed by the STAR.  
NOTE: For non-GPS equipped aircraft UBG DME must be operational.



(CONTINUED ON FOLLOWING PAGE)

- CITYY TRANSITION (CITYY.TMBRS1)
- GALLO TRANSITION (GALLO.TMBRS1)
- MACHU TRANSITION (MACHU.TMBRS1)
- MOXEE TRANSITION (MOXEE.TMBRS1)
- PORTL TRANSITION (PORTL.TMBRS1)
- RROSE TRANSITION (RROSE.TMBRS1)
- SOERN TRANSITION (SOERN.TMBRS1)
- SPNSR TRANSITION (SPNSR.TMBRS1)

NW-1, 26 JUN 2014 to 24 JUL 2014

NW-1, 26 JUN 2014 to 24 JUL 2014

# TMBRS ONE ARRIVAL (RNAV) Transition Routes