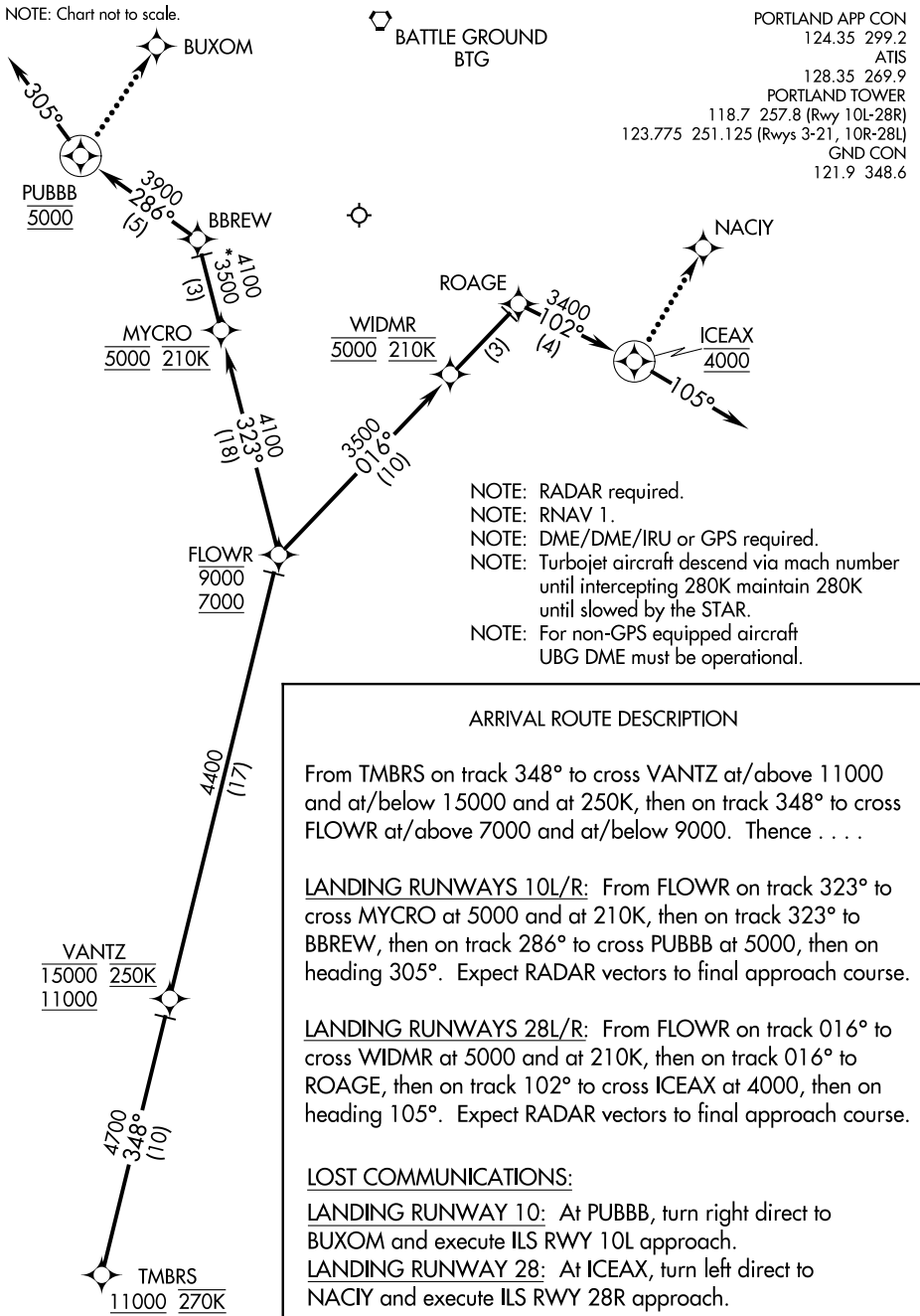


# TMBRS ONE ARRIVAL (RNAV) Arrival Routes

NOTE: Chart not to scale.



PORTLAND APP CON  
124.35 299.2  
ATIS  
128.35 269.9  
PORTLAND TOWER  
118.7 257.8 (Rwy 10L-28R)  
123.775 251.125 (Rwys 3-21, 10R-28L)  
GND CON  
121.9 348.6

- NOTE: RADAR required.
- NOTE: RNAV 1.
- NOTE: DME/DME/IRU or GPS required.
- NOTE: Turbojet aircraft descend via mach number until intercepting 280K maintain 280K until slowed by the STAR.
- NOTE: For non-GPS equipped aircraft UBG DME must be operational.

### ARRIVAL ROUTE DESCRIPTION

From TMBRS on track 348° to cross VANTZ at/above 11000 and at/below 15000 and at 250K, then on track 348° to cross FLOWR at/above 7000 and at/below 9000. Thence . . .

LANDING RUNWAYS 10L/R: From FLOWR on track 323° to cross MYCRO at 5000 and at 210K, then on track 323° to BBREW, then on track 286° to cross PUBBB at 5000, then on heading 305°. Expect RADAR vectors to final approach course.

LANDING RUNWAYS 28L/R: From FLOWR on track 016° to cross WIDMR at 5000 and at 210K, then on track 016° to ROAGE, then on track 102° to cross ICEAX at 4000, then on heading 105°. Expect RADAR vectors to final approach course.

### LOST COMMUNICATIONS:

LANDING RUNWAY 10: At PUBBB, turn right direct to BUXOM and execute ILS RWY 10L approach.

LANDING RUNWAY 28: At ICEAX, turn left direct to NACIY and execute ILS RWY 28R approach.

NW-1, 26 JUN 2014 to 24 JUL 2014

NW-1, 26 JUN 2014 to 24 JUL 2014