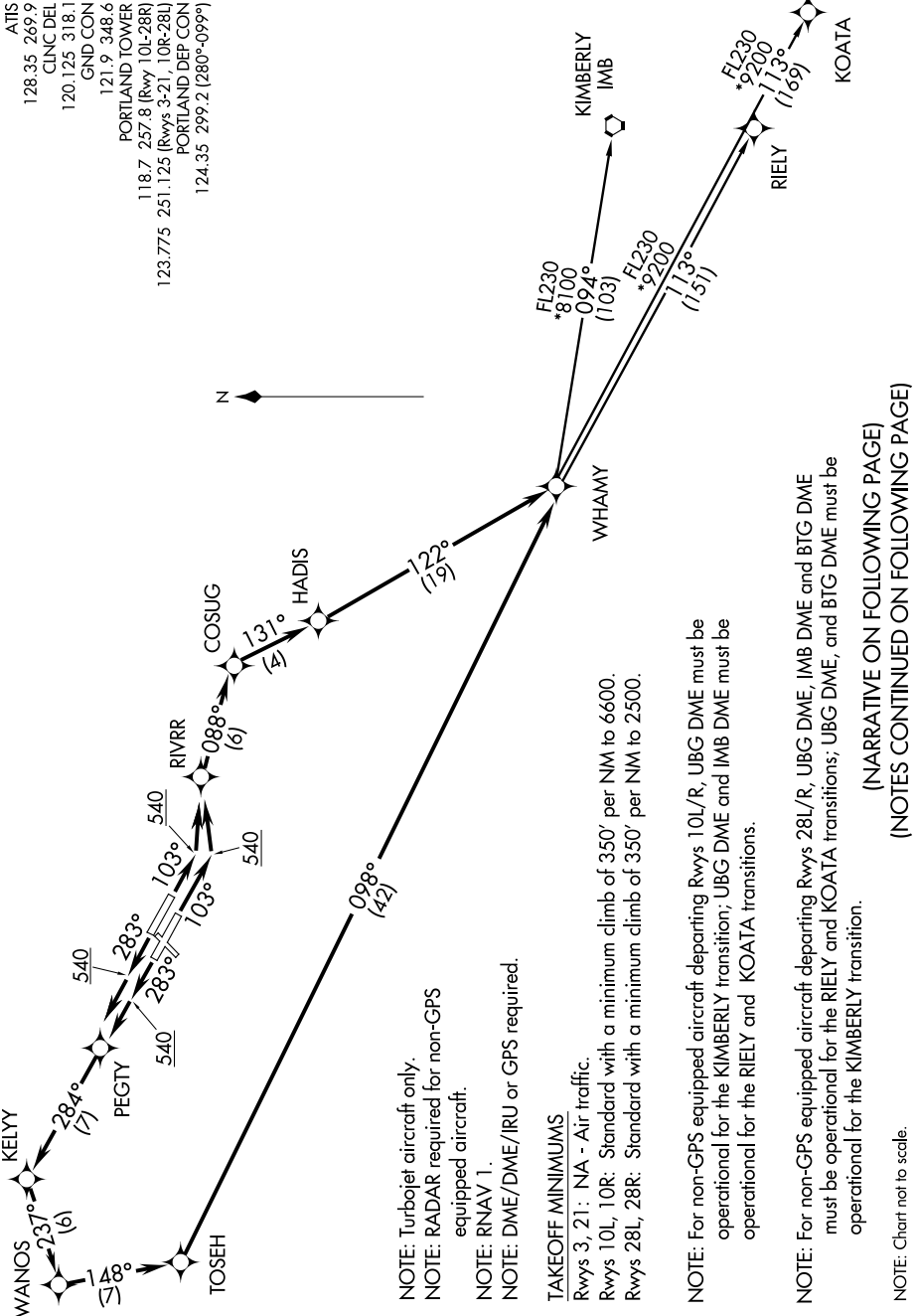


# WHAMY THREE DEPARTURE (RNAV)

ATIS 128.35 269.9  
 CLNC DEL 120.125 318.1  
 GND CON 121.9 348.6  
 PORTLAND TOWER 121.9 348.6  
 118.7 257.8 (Rwy 10L-28R)  
 PORTLAND DEP CON 123.775 251.125 (Rwys 3-21, 10R-28L)  
 124.35 299.2 (280-0999)



NOTE: Turbojet aircraft only.  
 NOTE: RADAR required for non-GPS equipped aircraft.  
 NOTE: RNAV 1.  
 NOTE: DME/DME/IRU or GPS required.

### TAKEOFF MINIMUMS

Rwy 3, 21: NA - Air traffic.  
 Rwy 10L, 10R: Standard with a minimum climb of 350' per NM to 6600.  
 Rwy 28L, 28R: Standard with a minimum climb of 350' per NM to 2500.

NOTE: For non-GPS equipped aircraft departing Rwys 10L/R, UBG DME must be operational for the KIMBERLY transition; UBG DME and IMB DME must be operational for the RIELY and KOATA transitions.

NOTE: For non-GPS equipped aircraft departing Rwys 28L/R, UBG DME, IMB DME and BTG DME must be operational for the RIELY and KOATA transitions; UBG DME, and BTG DME must be operational for the KIMBERLY transition.

NOTE: Chart not to scale.

(NARRATIVE ON FOLLOWING PAGE)  
 (NOTES CONTINUED ON FOLLOWING PAGE)