

HI-ILS or LOC/DME RWY 25

LOC I-PMD 110.7	APCH CRS 254°	Rwy Idg 12,002 TDZE 2503 Arpt Elev 2543
---------------------------	-------------------------	---

JAL-310 [USAF]

PALMDALE USAF PLANT 42 (KPMD)

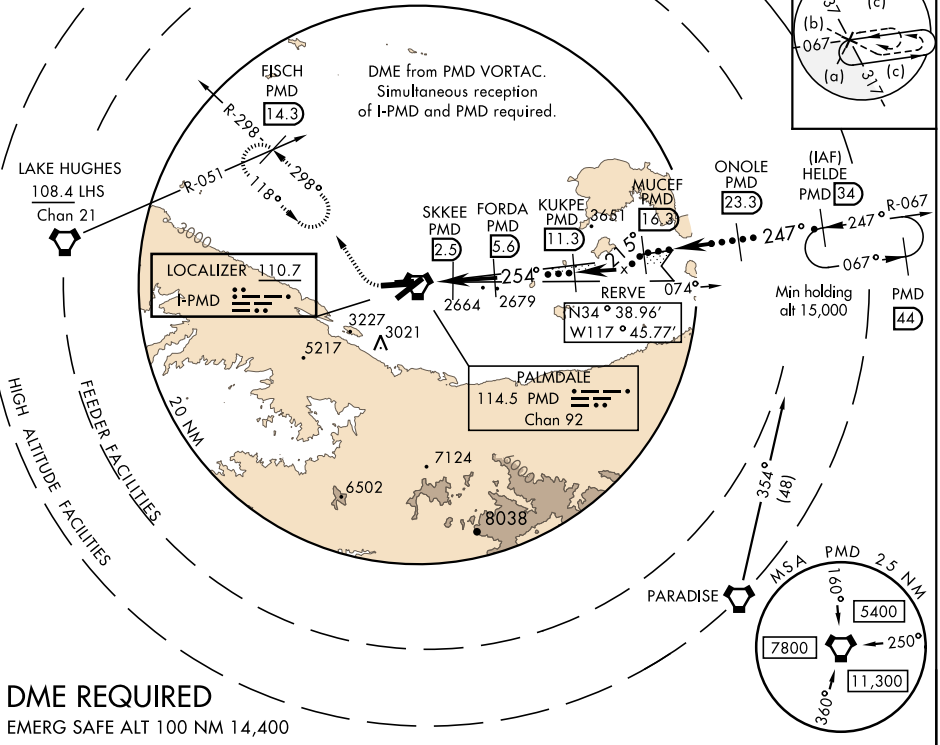
⚠ * Circling NA south of Rws 4 and 25.

MISSED APPROACH: Climb to 3000 then climbing right turn on heading 318° and PMD VORTAC R-298 to FISCH INT/PMD 14.3 DME/RADAR and hold, continue climb-in-hold to 6700.

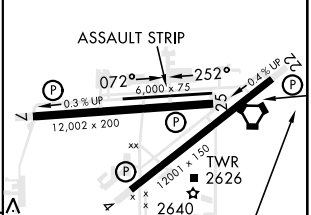
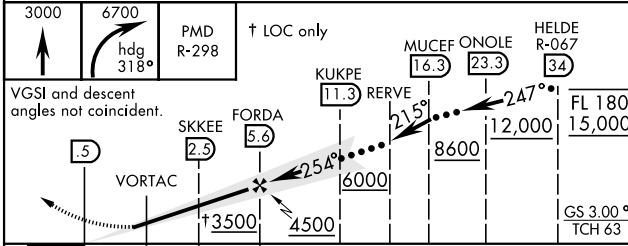
ATIS 118.275	JOSHUA APP CON 124.55 363.0	PALMDALE TOWER * 123.7 (CTAF) 0 317.6	GND CON 121.9 348.6
------------------------	---------------------------------------	---	-------------------------------

CAUTION:
High terrain 5 NM SW of airport.

When local altimeter setting not received,
use LANCASTER altimeter setting.



EMERG SAFE ALT 100 NM 14,400



HI-ILS or LOC/DME RWY 25

SW-3, 25 FEB 2021 to 25 MAR 2021

SW-3, 25 FEB 2021 to 25 MAR 2021