

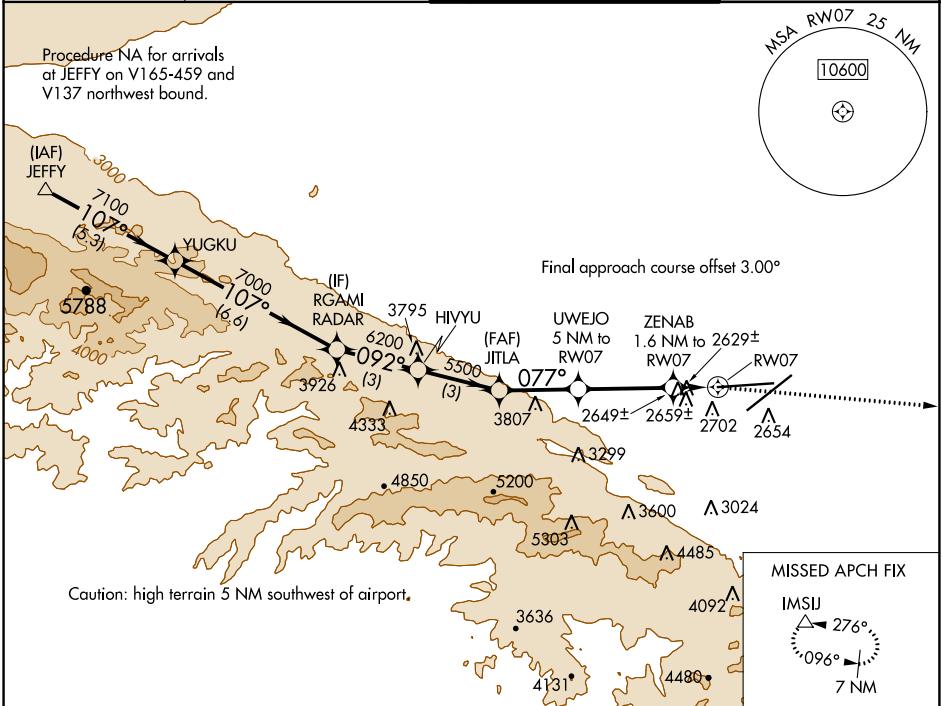
WAAS CH 53441 W07A	APP CRS 077°	Rwy ldg 12002 TDZE 2540 Apt Elev 2543
--	------------------------	--

RNAV (GPS) RWY 7

PALMDALE USAF PLANT 42 (PMD)

RNP APCH.	MISSED APPROACH: Climbing right turn to 7000 direct IMSJ and hold.
Circling NA for Cats C and D south of Rwy 4 and 25.	

ATIS 118.275	JOSHUA APP CON 124.55 363.0	PALMDALE TOWER * 123.7 (CTAF) 0 317.6	GND CON 121.9 317.6
------------------------	---------------------------------------	---	-------------------------------



	ELEV 2543	TDZE 2540					
JEFFY	YUGKU	RGAMI	HJVYU	JITLA	UWEJO	ZENAB	IMSJ
8000	7100	7000	6200	5500	4440	3180	7000
VGSIs and descent angles not coincident (VGSi Angle 3.00/TCH 78).							
077° to RW07							
0.5% DOWN							
0.72% UP							
0.3% UP							
0.6% DOWN							
ASSAULT STRIP 6000 X 75							
12002 X 200							
2626							
2640							
CATEGORY	A	B	C	D			
LP MDA	2880-1			340 (400-1)			
LNAV MDA	2920-1			380 (400-1)			
CIRCLING	3020-1 477 (500-1)		3060-1 517 (600-1)		3140-1½ 597 (600-1½)		3740-3 1197 (1200-3)

ELEV 2543	TDZE 2540
077° to RW07	
ASSAULT STRIP 6000 X 75	
12002 X 200	
2626	
2640	
REIL Rwy 4, 7, 22 and 25	
HIRL Rwy 4-22 and 7-25	

SW-3, 25 FEB 2021 to 25 MAR 2021

SW-3, 25 FEB 2021 to 25 MAR 2021