

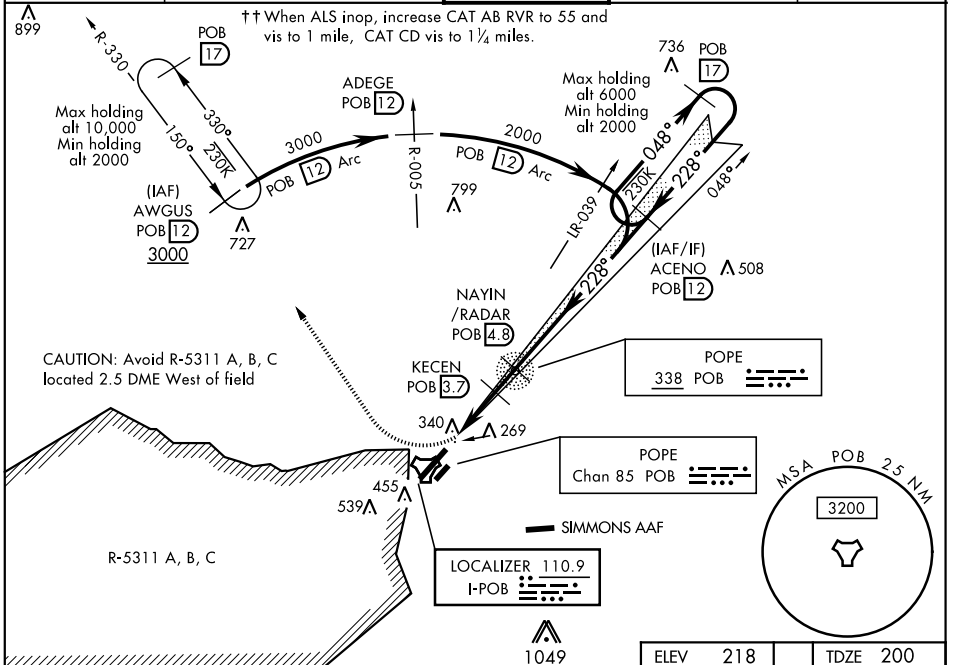
# ILS or LOC Z RWY 23

LOC I-POB <b>110.9</b>	APCH CRS <b>228°</b>	Rwy ldg TDZE Arprt Elev <b>7501</b> <b>200</b> <b>218</b>	AL-147 [USAF]	POPE AAF (KPOB)
---------------------------	-------------------------	--	---------------	-----------------

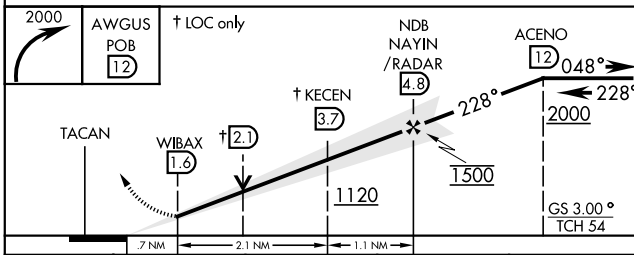
\* When ALS inop, increase RVR to 40 and vis to 3/4 mile.  
 \*\* When ALS inop, increase CAT AB RVR to 55 and vis to 1 mile, CAT CD RVR to 60, vis to 1 1/8 miles.  
 \*\*\* Circling not authorized SE of Rwy 5-23.

ALSF-1  
 (A1) MISSED APPROACH: Climbing right turn to 2000 direct AWGUS and Hold.

ATIS <b>132.3 353.725</b>	FAYETTEVILLE APP CON <b>125.175 285.575</b> (271° - 090°) <b>133.0 290.25</b> (091° - 270°)	POPE TOWER <b>135.025 291.1</b>	GND CON <b>124.55 275.8</b>	CLNC DEL <b>275.8</b>
------------------------------	---	------------------------------------	--------------------------------	--------------------------



**RADAR REQUIRED**  
EMERG SAFE ALT 100 NM 5300 FROM "POB" TACAN



CATEGORY	A	B	C	D
S-ILS 23*	400/24		200	(200-1/2)
S-LOC 23**	620/24	420 (500-1/2)	620/40	420 (500-3/4)
CIRCLING ***	760-1	542 (600-1)	920-2 702 (800-2)	1060-2 3/4 842 (900-2 3/4)
WITHOUT LAST STEPDOWN FIX				
S-LOC 23††	640/24	440 (500-1/2)	640/45	440 (500-7/8)

ELEV 218	TDZE 200
Rwy 5 ldg 7501'	Rwy 23 ldg 7501'

FAF to MAP 3.2 NM					
Knots	60	90	120	150	180
Min:Sec	3:12	2:08	1:36	1:17	1:04

# ILS or LOC Z RWY 23

SE-2, 25 FEB 2021 to 25 MAR 2021

SE-2, 25 FEB 2021 to 25 MAR 2021