

TACAN-A

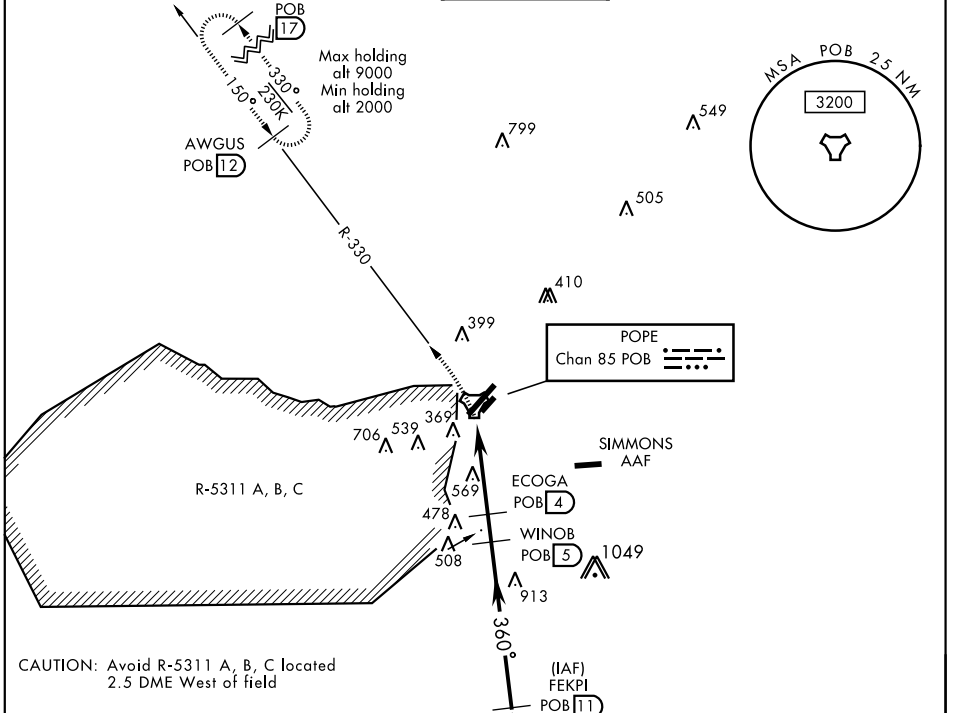
TACAN POB Chan 85	APCH CRS 360°	Rwy ldg TDZE Arprt Elev N/A N/A 218
-----------------------------	-------------------------	---

AL-147 [USAF]

POPE AAF (KPOB)

▼ * Circling not authorized SE of Rwy 5-23.
 MISSED APPROACH: Climbing left turn to 2000 via POB R-330 to AWGUS and hold.

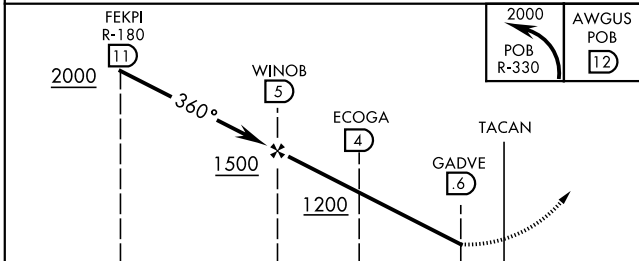
ATIS 132.3 353.725	FAYETTEVILLE APP CON 125.175 285.575 (271°- 090°) 133.0 290.25 (091°- 270°)	POPE TOWER 135.025 291.1	GND CON 124.55 275.8	CLNC DEL 275.8
------------------------------	---	------------------------------------	--------------------------------	--------------------------



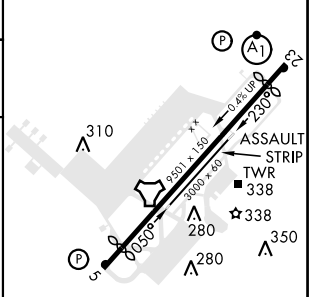
SE-2, 25 FEB 2021 to 25 MAR 2021

SE-2, 25 FEB 2021 to 25 MAR 2021

RADAR REQUIRED
EMERG SAFE ALT 100 NM 5300



ELEV 218
Rwy 05 ldg 7501'
Rwy 23 ldg 7501'



CATEGORY	A	B	C	D
CIRCLING *	840-1	622 (700-1)	920-2 702 (800-2)	1060-2¾ 842 (900-2¾)

FORT BRAGG, NORTH CAROLINA 35°10'N-79°01'W POPE AAF (KPOB)

Amdt 4 24MAY18

TACAN-A