

WAAS CH 63217 W32A	APP CRS 315°	Rwy Idg 4800 TDZE 356 Apt Elev 358
----------------------------------------	------------------------	---------------------------------------------------------------

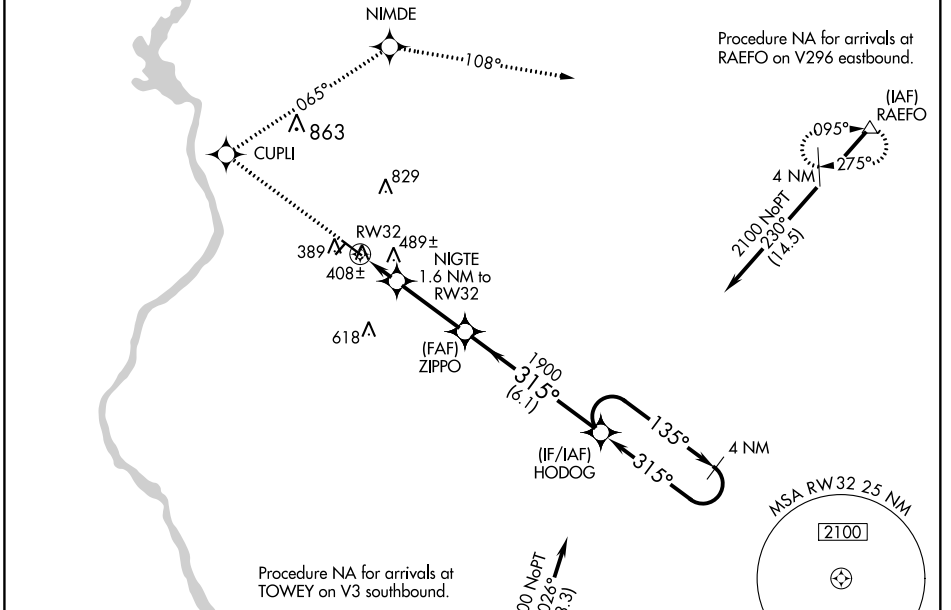
RNAV (GPS) RWY 32

RICHMOND COUNTY (R/CZ)

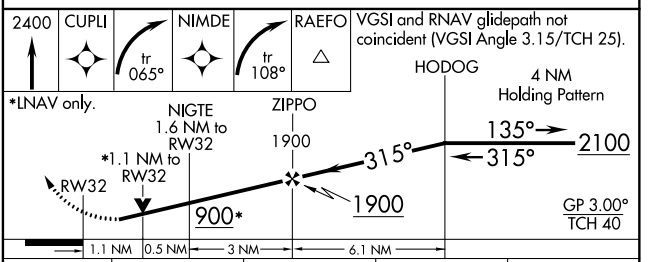
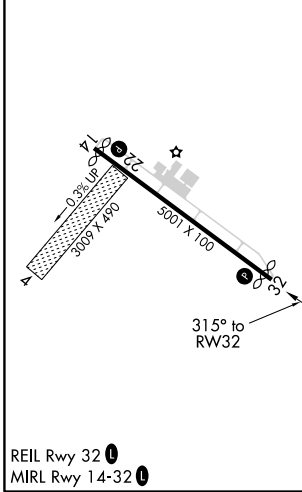
⚠ Baro-VNAV and VDP NA when using MacKall AAF altimeter setting. For uncompensated Baro-VNAV systems, LNAV/VNAV NA below -15°C (5°F) or above 48°C (118°F). DME/DME RNP-0.3 NA. Rwy 32 helicopter visibility reduction below 3/4 SM NA. When local altimeter setting not received, use MacKall AAF altimeter setting and increase all DA 39 feet and all MDA 40 feet and increase LNAV Cat C visibility 3/8 SM. Circling Rwy 14 NA at night. Circling NA to Rwy 4 and 22.

MISSED APPROACH: Climb to 2400 direct CUPLI and right turn on track 065° to NIMDE and on track 108° to RAEFO and hold.

AWOS-3 118.775	FAYETTEVILLE APP CON 127.8 343.725	UNICOM 122.8 (CTAF) 0
--------------------------	----------------------------------------------	---------------------------------



ELEV 358	TDZE 356
----------	----------



CATEGORY	A	B	C	D
LPV DA	633-1 277 (300-1)			
LNAV/VNAV DA	794-1½ 438 (500-1½)			
LNAV MDA	740-1	384 (400-1)	740-1¼ 384 (400-1¼)	740-1¼ 384 (400-1¼)
CIRCLING	800-1 442 (500-1)	820-1 462 (500-1)	820-1½ 462 (500-1½)	920-2 562 (600-2)

SE-2, 25 FEB 2021 to 25 MAR 2021

SE-2, 25 FEB 2021 to 25 MAR 2021