

RIVERSIDE, CALIFORNIA

# RNAV (GPS) RWY 14

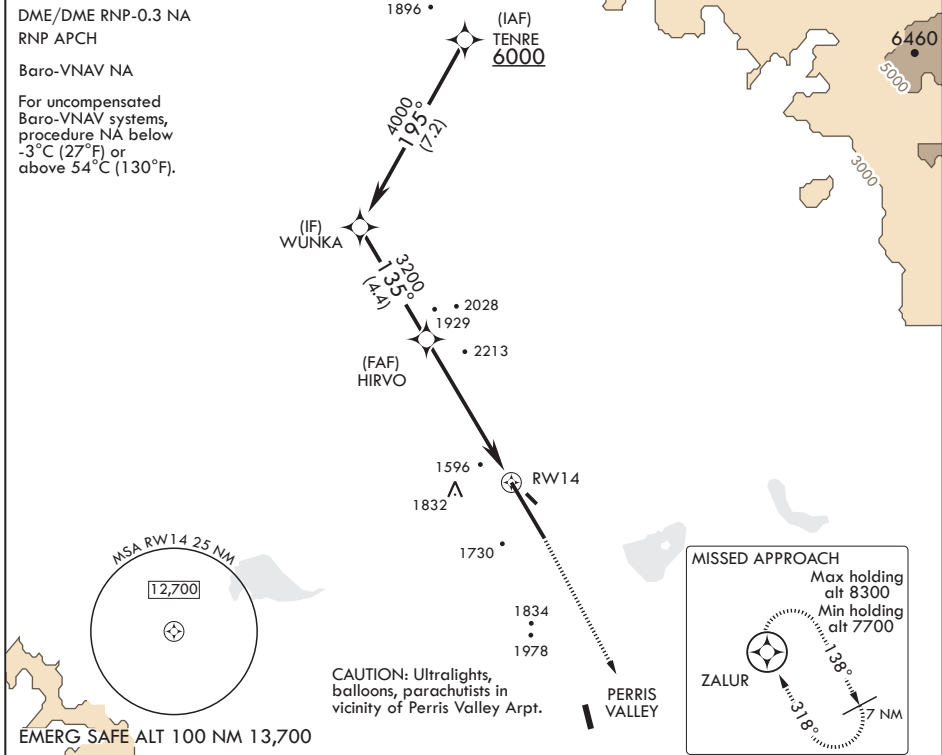
WAAS CH <b>91363</b> W14A	APCH CRS <b>135°</b>	Rwy ldg TDZE <b>13,302</b> Arprt Elev <b>1536</b>
---------------------------------	-------------------------	--

AL-348 (USAF)

MARCH ARB (KRIV)

**⚠** \* Circling NA NE of Rwy 14-32. Rapid rising terrain.  
**MISSED APPROACH:** Climb to 2300 then climbing right turn direct ZALUR and hold, continue climb in hold to 7700.

ATIS <b>134.75 239.05</b>	SOCAL APP CON/DEP CON <b>134.0 278.3</b>	TOWER <b>127.65 253.5</b>	GND CON <b>121.75 335.8</b>	CLNC DEL <b>121.75 335.8</b>
------------------------------	---	------------------------------	--------------------------------	---------------------------------



TENRE	ELEV 1536				TDZE 1536
6000					
GP 2.70° TCH 56	† LNAV only † 2.8 NM to RWY14 5.6 NM				
CATEGORY	A	B	C	D	
LPV DA	1756/40		220	(300-¾)	
LNAV/VNAV DA	2080-1½		544	(600-1½)	
LNAV MDA	2380/55 844 (900-1)	2380-1¼ 844 (900-1¼)	2380-2½	844 (900-2½)	
<b>C</b> CIRCLING*	2380-1¼	844 (900-1¼)	2380-2½ 844 (900-2½)	2440-3 904 (1000-3)	

RIVERSIDE, CALIFORNIA

33°53'N - 117°16'W

MARCH ARB (KRIV)

Amdt 7 31JAN19  
TERPS

# RNAV (GPS) RWY 14

SW-3, 25 FEB 2021 to 25 MAR 2021

SW-3, 25 FEB 2021 to 25 MAR 2021