

RIVERSIDE, CALIFORNIA

RNAV (GPS) RWY 32

WAAS CH 91364 W32A	APCH CRS 315°	Rwy ldg TDZE Arprt Elev	13,302 1497 1536
---------------------------------	-------------------------	-------------------------------	---

AL-348 (USAF)

MARCH ARB (KRIV)

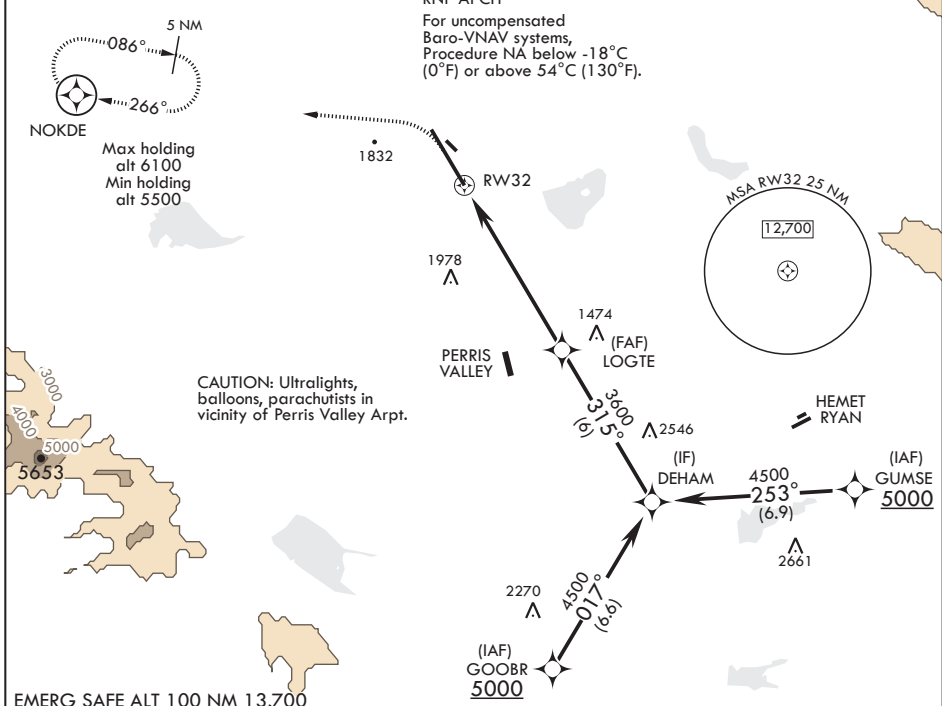
V * When ALS inop increase CAT ABCD RVR to 40, vis to 3/4 mile.
 ** When ALS inop increase CAT ABCD RVR to 60, vis to 1 1/8 miles.
 *** When ALS inop, increase CAT AB RVR to 55, vis to 1 mile; CAT CD vis to 1 3/8 miles.



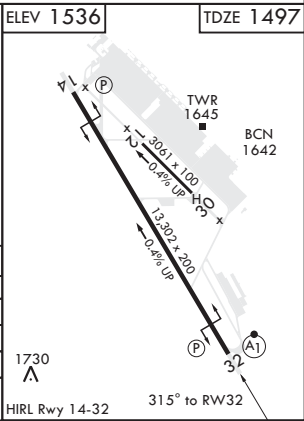
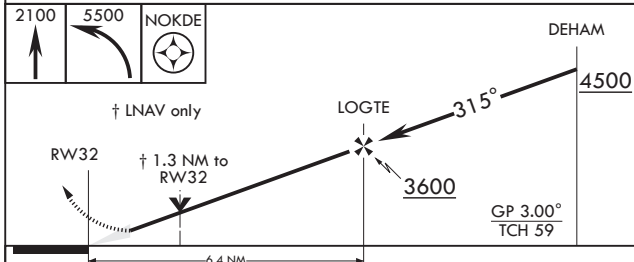
MISSED APPROACH: Climb to 2100 then climbing left turn to 5500 direct NOKDE and hold, continue climb in hold to 5500.

ATIS 134.75 239.05	SOCAL APP CON/DEP CON 134.0 278.3	TOWER 127.65 253.5	GND CON 121.75 335.8	CLNC DEL 121.75 335.8
------------------------------	---	------------------------------	--------------------------------	---------------------------------

****Circling NA NE of Rwy 14-32. Rapid rising terrain.



EMERG SAFE ALT 100 NM 13,700



CATEGORY	A	B	C	D
LPV DA*	1697/24	200	(200-1/2)	
LNAV/VNAV DA**	1909/40	412	(400-3/4)	
LNAV MDA***	1960/24	463 (500-1/2)	1960/50	463 (500-1)
C CIRCLING****	2180-1 664 (700-1)	2260-1 724 (800-1)	2300-2/4 764 (800-2/4)	2440-3 904 (1000-3)

RIVERSIDE, CALIFORNIA

33°53'N - 117°16'W

MARCH ARB (KRIV)

Amdt 6 31JAN19

RNAV (GPS) RWY 32

SW-3, 25 FEB 2021 to 25 MAR 2021

SW-3, 25 FEB 2021 to 25 MAR 2021