

WAAS CH 82425 W14A	APP CRS 141°	Rwy Idg TDZE Apt Elev	5507 998 998
--	------------------------	-----------------------------	---

RNAV (GPS) RWY 14

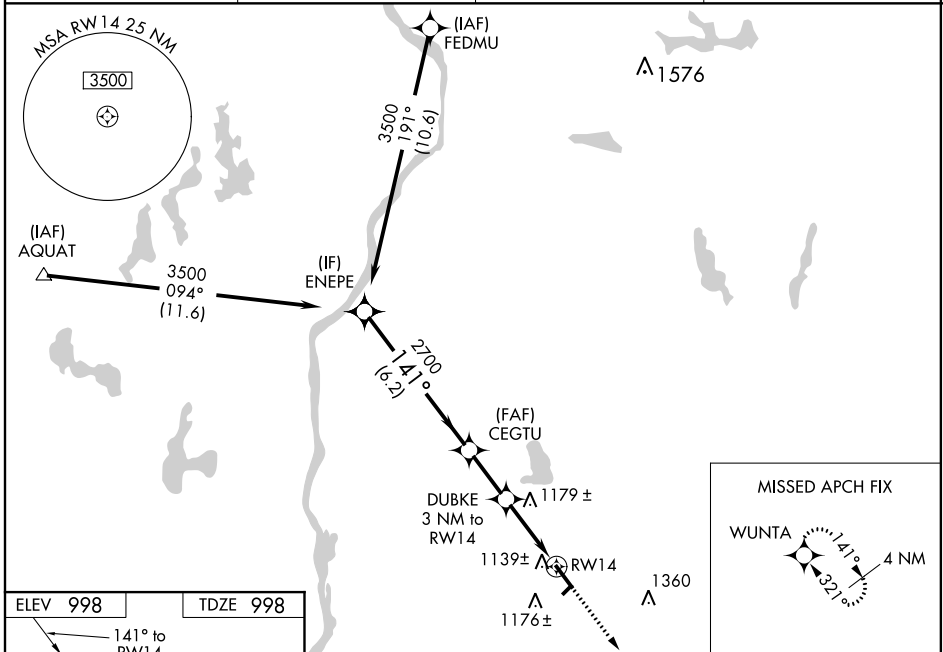
NEW RICHMOND RGNL (R.NH)

RNP APCH.

⚠ Baro-VNAV NA when using Osceola altimeter setting. For uncompensated Baro-VNAV systems, LNAV/VNAV NA below -16°C (4°F) or above 37°C (98°F). Rwy 14 helicopter visibility reduction below ¾ SM NA. When local altimeter setting not received, use Osceola altimeter setting and increase all DA/MDA 40 feet; Circling visibility Cats C and D ¼ SM.

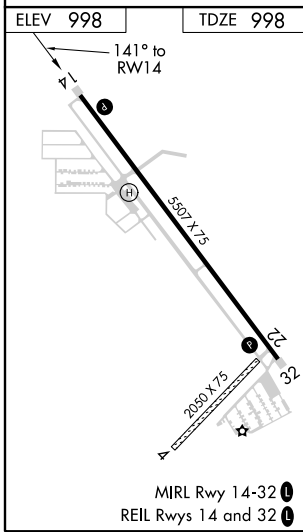
MISSED APPROACH: Climb to 3500 direct WUNTA and hold.

AWOS-3 120.0	MINNEAPOLIS APP CON 121.2 335.65	GCO 121.725	UNICOM 122.975 (CTAF) 0
------------------------	--	-----------------------	-----------------------------------



EC-3, 25 FEB 2021 to 25 MAR 2021

EC-3, 25 FEB 2021 to 25 MAR 2021



VGSI and RNAV glidepath not coincident (VGSI angle 3.00/TCH40).

ENEPE	CEGTU	DUBKE	3500	2700	2000*	3500	WUNTA
3500	2700	2000*	↑	✧			
GP 3.00°							*LNAV only
TCH 50							
	6.2 NM	2.2 NM	3 NM				
CATEGORY	A	B	C	D			
LPV DA		1272-1	274 (300-1)				
LNAV/VNAV DA		1320-1	322 (400-1)				
LNAV MDA	1440-1	442 (500-1)	1440-1¾	442 (500-1¾)			
C CIRCLING	1540-1	542 (600-1)	1660-1¾	662 (700-1¾)	1660-2	662 (700-2)	