

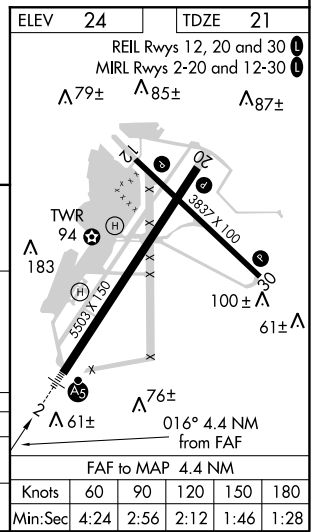
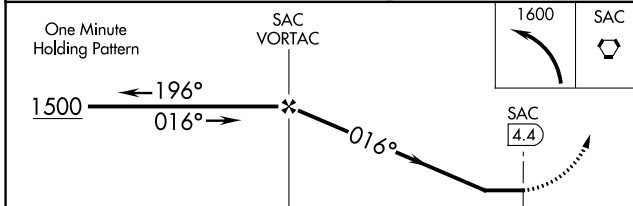
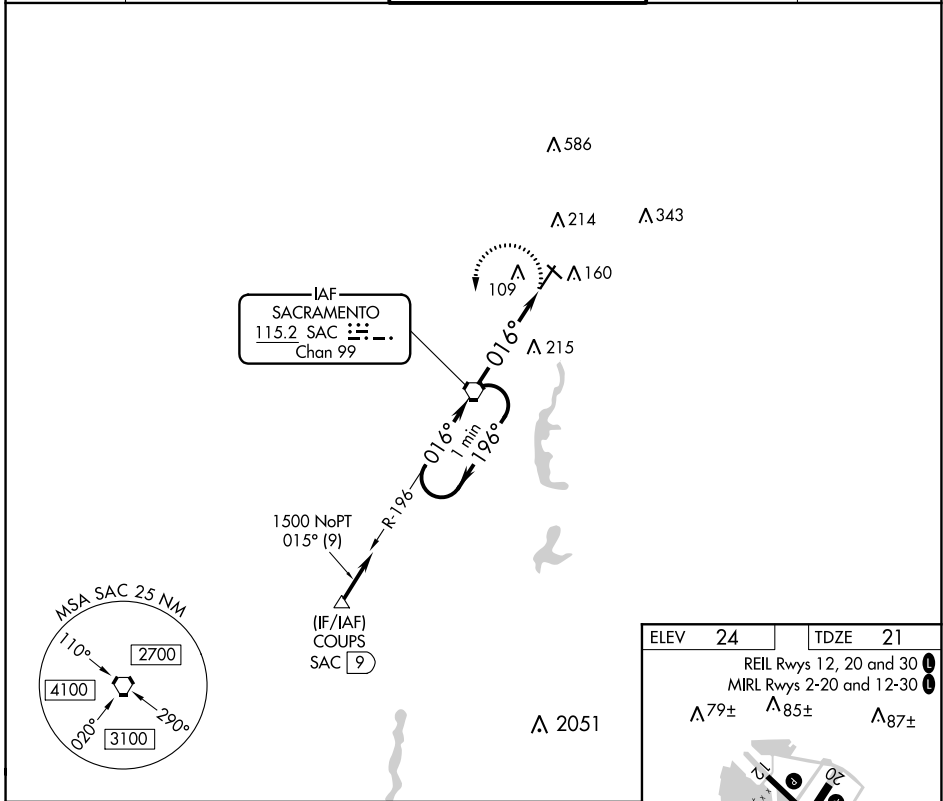
VORTAC SAC <b>115.2</b> Chan <b>99</b>	APP CRS <b>016°</b>	Rwy Idg <b>5503</b> TDZE <b>21</b> Apt Elev <b>24</b>
--	------------------------	---

# VOR RWY 2

## SACRAMENTO EXECUTIVE (SAC)

<p>When local altimeter setting not received, use Sacramento Inl altimeter setting and increase all MDA 40 feet.</p>	<p>MALSRS</p>	<p>MISSED APPROACH: Climbing left turn to 1600 direct SAC VORTAC and hold.</p>		
			<p>ATIS <b>125.5</b></p>	<p>NORCAL APP CON <b>125.25 257.9</b></p>

ATIS <b>125.5</b>	NORCAL APP CON <b>125.25 257.9</b>	EXEC TOWER * <b>119.5 (CTAF) 0 278.8</b>	GND CON <b>125.0</b>	UNICOM <b>122.95</b>
----------------------	---------------------------------------	---	-------------------------	-------------------------



CATEGORY	A	B	C	D
S-2	520-1/2	499 (500-1/2)	520-1	499 (500-1)
CIRCLING	520-1	496 (500-1)	520-1/2	580-2
			496 (500-1/2)	556 (600-2)

SW-2, 25 FEB 2021 to 25 MAR 2021

SW-2, 25 FEB 2021 to 25 MAR 2021