

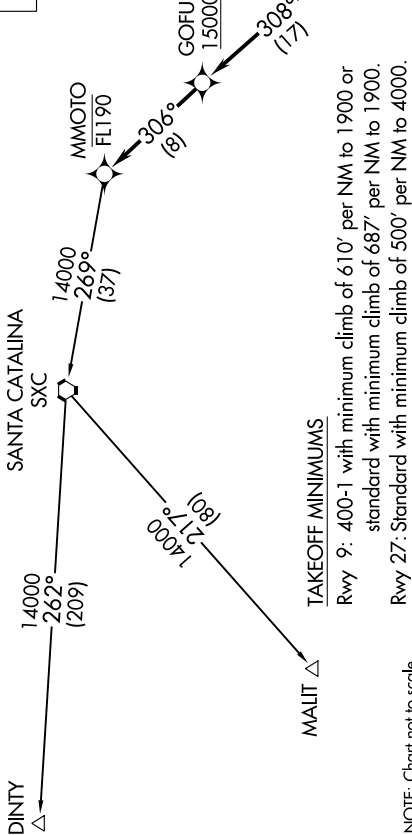
MMOTO TWO DEPARTURE (RNAV)

AL-373 (FAA)

SAN DIEGO INTL (SAN)
SAN DIEGO, CALIFORNIA

D-ATIS 134.8
 CLNC DEL 125.9
 CPDLC 123.9
 GND CON 123.9
 LINDBERGH TOWER 118.3 338.225
 SOCIAL DEP CON 124.35 279.625 (EAST)
 125.3 290.4 (WEST)

TOP ALTITUDE: ASSIGNED BY ATC



TAKEOFF MINIMUMS

Rwy 9: 400-1 with minimum climb of 610' per NM to 1900 or standard with minimum climb of 687' per NM to 1900.
 Rwy 27: Standard with minimum climb of 500' per NM to 4000.

NOTE: Chart not to scale.

DEPARTURE ROUTE DESCRIPTION

TAKEOFF RUNWAY 9: Climb heading 095° to 4000, then left turn direct BAUCA, then on track 307° to ECHHO, then on track 308° to cross GOFUR at or above 15000, then on track 306° to cross MMOTO at or below FL190, thence. . . .

TAKEOFF RUNWAY 27: Climb heading 275° to 520, then right turn direct LANDN, then on track 330° to ECHHO, then on track 308° to cross GOFUR at or above 15000, then on track 306° to cross MMOTO at or below FL190, thence. . . .

. . . on (transition) maintain altitude assigned by ATC, expect filed altitude 10 minutes after departure.

DINTY TRANSITION (MMOTO2.DINTY)

MALIT TRANSITION (MMOTO2.MALIT)

- NOTE: RADAR required.
- NOTE: RNAV 1.
- NOTE: GPS required.
- NOTE: If unable altitude restriction at GOFUR, advise ATC on initial contact.
- NOTE: DINTY transition ATC only.

SW-3, 25 FEB 2021 to 25 MAR 2021

SW-3, 25 FEB 2021 to 25 MAR 2021

MMOTO TWO DEPARTURE (RNAV)