

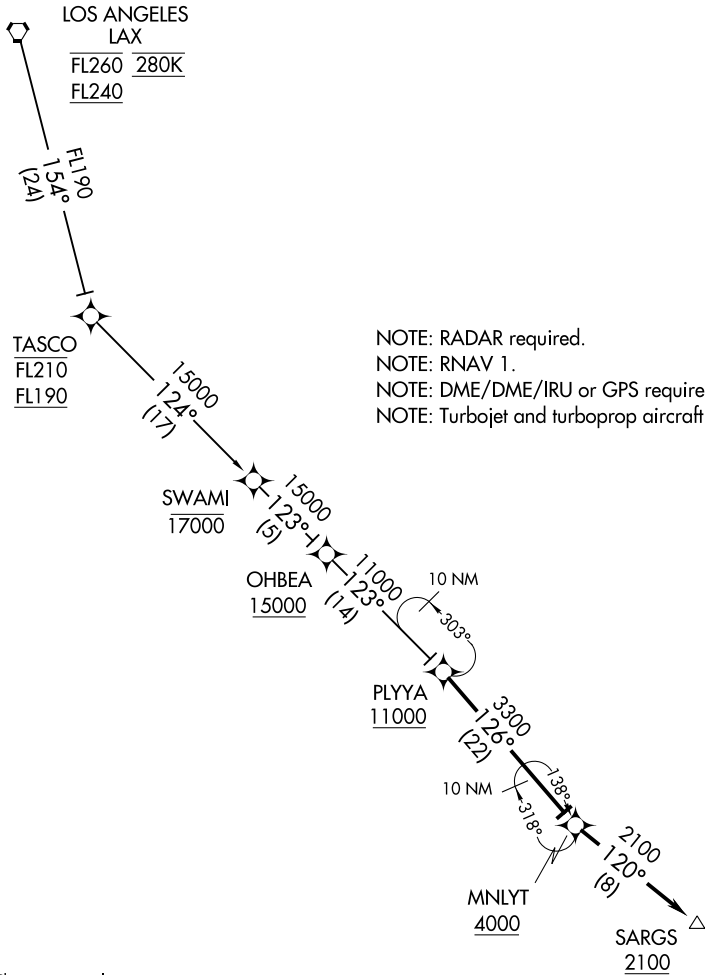
(PLYA.PLYA1) 17173

# PLYA ONE ARRIVAL (RNAV)

AL-373 (FAA)

SAN DIEGO INTL (SAN)  
SAN DIEGO, CALIFORNIA

SOCAL APP CON  
128.1 281.4  
D-ATIS 134.8



NOTE: RADAR required.  
 NOTE: RNAV 1.  
 NOTE: DME/DME/IRU or GPS required.  
 NOTE: Turbojet and turboprop aircraft only.

SW-3, 25 FEB 2021 to 25 MAR 2021

SW-3, 25 FEB 2021 to 25 MAR 2021

NOTE: Chart not to scale.

## ARRIVAL ROUTE DESCRIPTION

### LOS ANGELES TRANSITION (LAX.PLYA1)

From PLYYA on track 126° to cross MNLYT at or above 4000.

**LANDING RUNWAY 9:** From MNLYT on track 120° to cross SARGS at or above 2100.

Expect ILS or LOC RWY 9 approach.

# PLYA ONE ARRIVAL (RNAV)

(PLYA.PLYA1) 02MAR17

SAN DIEGO, CALIFORNIA  
SAN DIEGO INTL (SAN)