

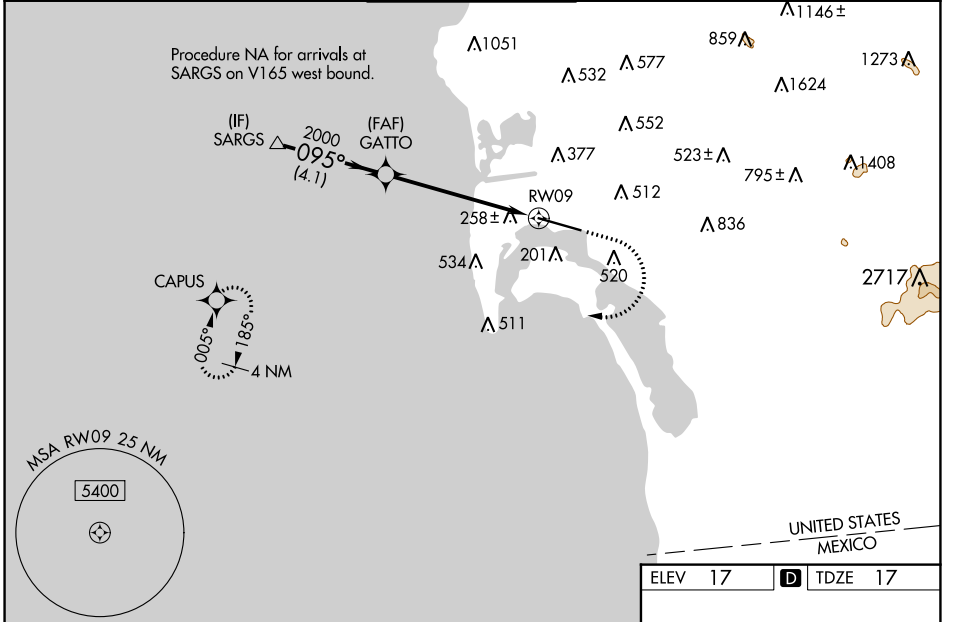
WAAS CH 49237 W09A	APP CRS 095°	Rwy Idg 7280 TDZE 17 Apt Elev 17
--	------------------------	---

RNAV (GPS) RWY 9

SAN DIEGO INTL (SAN)

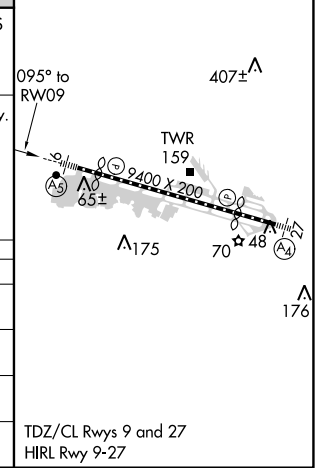
RNP APCH.	<p>⚠ Circling NA north of Rwy 9-27. For uncompensated Baro-VNAV systems, LNAV/VNAV NA below 6°C or above 47°C. When Circling to Rwy 27 at night, operational VGSI required, remain on or above VGSI glidepath until threshold. Rwy 9 helicopter visibility reduction below RVR 4000 NA. Inop table does not apply to LPV all Cats. For inop ALS, increase LNAV Cats A/B visibility to RVR 5500.</p>	MALSRL	<p>MISSED APPROACH: Climb to 2000 then climbing right turn to 3000 direct CAPUS and hold.</p>

D-ATIS 134.8	SOCAL APP CON 119.6 363.1 (WEST) 124.35 279.625 (EAST)	LINDBERGH TOWER 118.3 338.225	GND CON 123.9	CLNC DEL 125.9	CPDLC
------------------------	--	---	-------------------------	--------------------------	-------



VGSI and RNAV glidepath not coincident (VGSI Angle 3.30/TCH 76).

	SARGS	GATTO	RWY 9	CAPUS
	2100	2000	2000	
	095°			
	GP 3.10°			
	TCH 55			
	4.1 NM	4.3 NM	1.6 NM	
CATEGORY	A	B	C	D
LPV DA		262/40	245 (300-¾)	
LNAV/VNAV DA		621-1½	604 (700-1½)	
LNAV MDA	600/40	583 (600-¾)	600-1¼	583 (600-1¼)
CIRCLING	800-1 783 (800-1)	820-1 803 (900-1)	820-2¼ 803 (900-2¼)	940-3 923 (1000-3)



SW-3, 25 FEB 2021 to 25 MAR 2021

SW-3, 25 FEB 2021 to 25 MAR 2021