

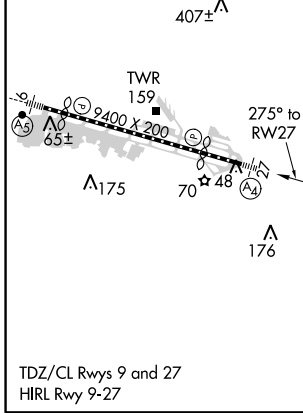
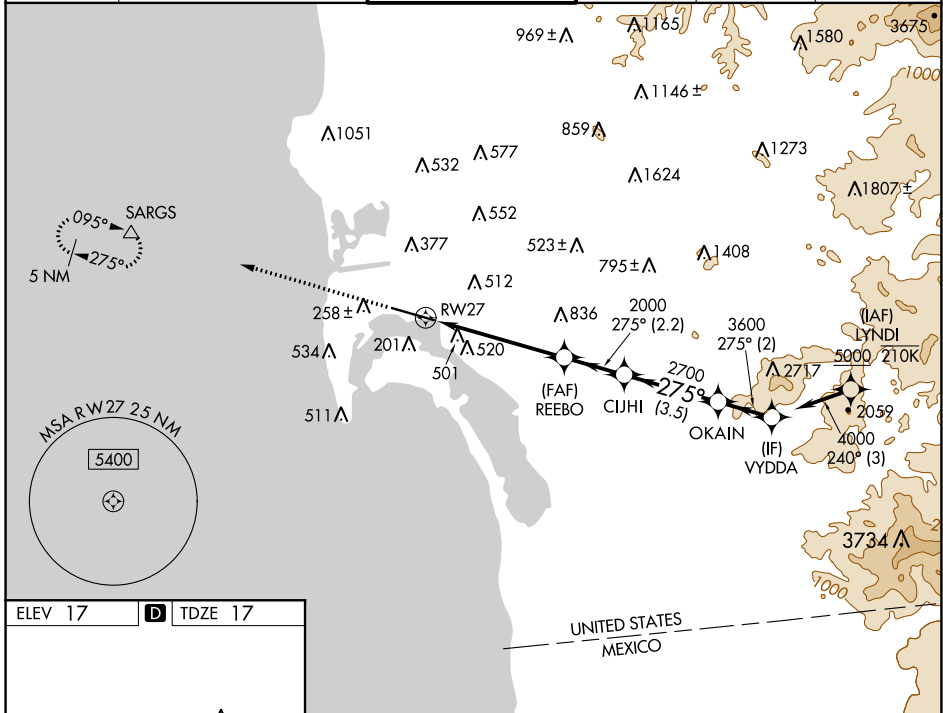
WAAS CH <b>82527</b> <b>W27A</b>	APP CRS <b>275°</b>	Rwy Idg TDZE Apt Elev	<b>7590</b> <b>17</b> <b>17</b>
--	------------------------	-----------------------------	---------------------------------------

# RNAV (GPS) Y RWY 27

SAN DIEGO INTL (SAN)

RNP APCH.	MALS	MISSED APPROACH: Climb to 2500 direct SARGs and hold.
<p><b>▼</b> Rwy 27 helicopter visibility reduction below RVR 5000 NA. Straight-in Rwy 27 at night, operational VGSI required, remain on or above VGSI glidepath until threshold. Circling NA north of Rwy 9-27. For inop ALS, increase LNAV Cats C/D visibility to 2 SM. Inop table does not apply to LP Cats A/B and LNAV Cat A.</p>		

D-ATIS <b>134.8</b>	SOCAL APP CON <b>119.6 363.1</b> (WEST) <b>124.35 279.625</b> (EAST)	LINDBERGH TOWER <b>118.3 338.225</b>	GND CON <b>123.9</b>	CLNC DEL <b>125.9</b>	CPDLC
------------------------	--	---	-------------------------	--------------------------	-------



ELEV 17	<b>D</b>	TDZE 17																						
2500	SARGs	VYDDA																						
↑	△																							
RWY 27	REEBO	CIJHI	OKAIN	VYDDA																				
2000	2700	3600	4000																					
5.2 NM	2.2 NM	3.5 NM	2 NM																					
<table border="1"> <tr> <th>CATEGORY</th> <th>A</th> <th>B</th> <th>C</th> <th>D</th> </tr> <tr> <td>LP MDA</td> <td>680/50</td> <td>663 (700-1)</td> <td>680-1¾</td> <td>663 (700-1¾)</td> </tr> <tr> <td>LNAV MDA</td> <td>760/50 743 (800-1)</td> <td>760/55 743 (800-1)</td> <td>760-1⅞</td> <td>743 (800-1⅞)</td> </tr> <tr> <td><b>C</b> CIRCLING</td> <td>820-1 803 (900-1)</td> <td>820-1¼ 803 (900-1¼)</td> <td>820-2½ 803 (900-2½)</td> <td>940-3 923 (1000-3)</td> </tr> </table>	CATEGORY	A	B	C	D	LP MDA	680/50	663 (700-1)	680-1¾	663 (700-1¾)	LNAV MDA	760/50 743 (800-1)	760/55 743 (800-1)	760-1⅞	743 (800-1⅞)	<b>C</b> CIRCLING	820-1 803 (900-1)	820-1¼ 803 (900-1¼)	820-2½ 803 (900-2½)	940-3 923 (1000-3)				
CATEGORY	A	B	C	D																				
LP MDA	680/50	663 (700-1)	680-1¾	663 (700-1¾)																				
LNAV MDA	760/50 743 (800-1)	760/55 743 (800-1)	760-1⅞	743 (800-1⅞)																				
<b>C</b> CIRCLING	820-1 803 (900-1)	820-1¼ 803 (900-1¼)	820-2½ 803 (900-2½)	940-3 923 (1000-3)																				

SW-3, 25 FEB 2021 to 25 MAR 2021

SW-3, 25 FEB 2021 to 25 MAR 2021