

(ZZ0002.ZZ000) 18032

ZZ000 TWO DEPARTURE (RNAV)

AL-373 (FAA)

SAN DIEGO INTL (S.A.N)
SAN DIEGO, CALIFORNIA

SW-3, 25 FEB 2021 to 25 MAR 2021

DEPARTURE ROUTE DESCRIPTION

TAKEOFF RUNWAY 27: Climb heading 275° to 520 then direct to cross JETTI at or below 12000, then left turn direct ZZ000, thence

. on (transition). Turbojets maintain FL230, turboprops maintain 15000, expect filed altitude 10 minutes after departure.

CENZA TRANSITION (ZZ0002.CENZA)

IMPERIAL TRANSITION (ZZ0002.IPL)

MTBAL TRANSITION (ZZ0002.MTBAL)

TAKEOFF MINIMUMS

Rwy 27: Standard with minimum climb of 500' per NM to 520.

**TOP ALTITUDE:
JETS FL230
TURBOPROPS 15000**

D-ATIS 134.8
CLNC DEL 125.9
CPDLC 123.9
GND CON 123.9
LINDBERGH TOWER 118.3 338.225
SOCAL DEP CON 125.15 317.55

N

MTBAL

NSHEE

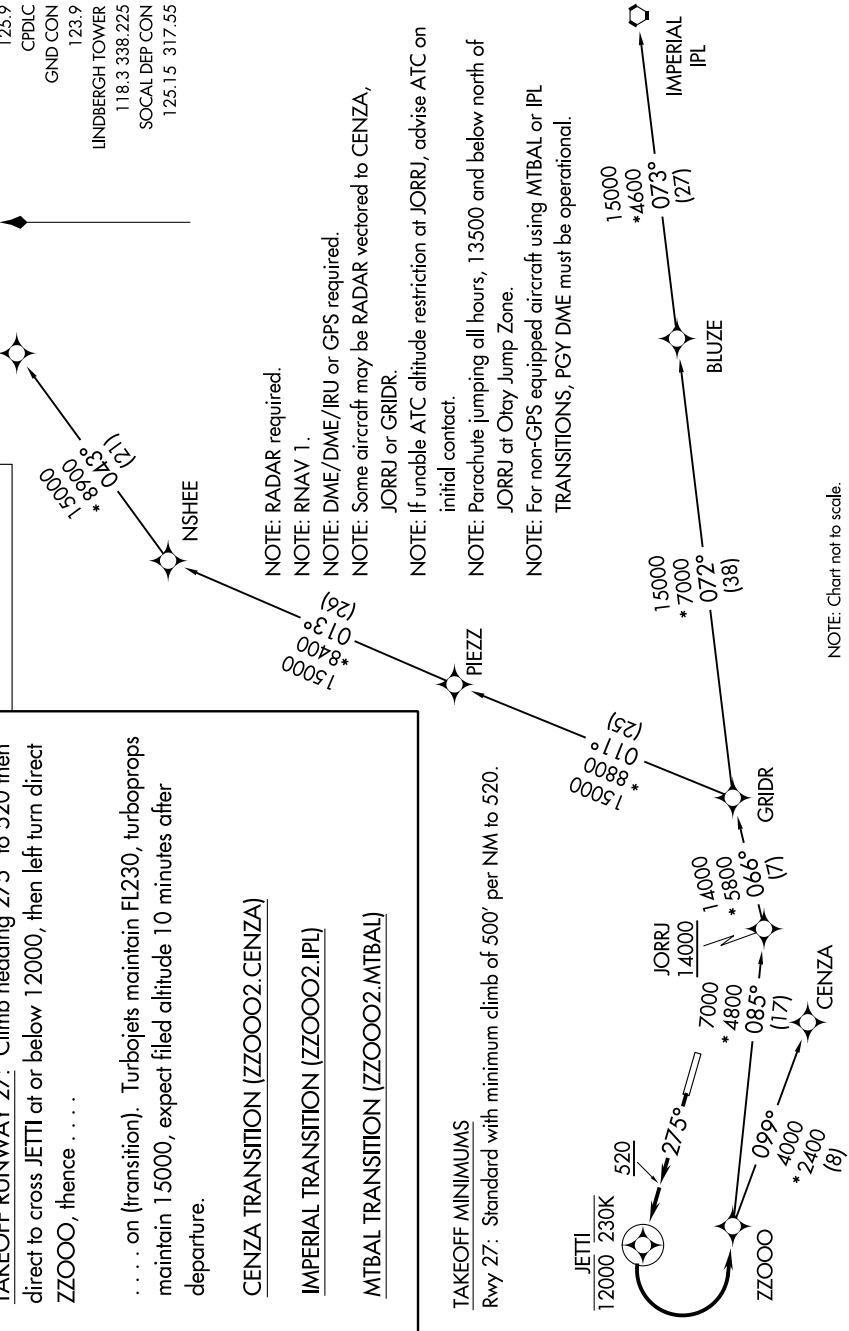
PIEZZ

GRIDR

JORRJ

ZZ000

IMPERIAL IPL



NOTE: RADAR required.

NOTE: RNAV 1.

NOTE: DME/DME/IRU or GPS required.

NOTE: Some aircraft may be RADAR vectored to CENZA, JORRJ or GRIDR.

NOTE: If unable ATC altitude restriction at JORRJ, advise ATC on initial contact.

NOTE: Parachute jumping all hours, 13500 and below north of JORRJ at Oray Jump Zone.

NOTE: For non-GPS equipped aircraft using MTBAL or IPL TRANSITIONS, PGY DME must be operational.

NOTE: Chart not to scale.

SW-3, 25 FEB 2021 to 25 MAR 2021

ZZ000 TWO DEPARTURE (RNAV)

(ZZ0002.ZZ000) 01FEB18

SAN DIEGO, CALIFORNIA
SAN DIEGO INTL (S.A.N)