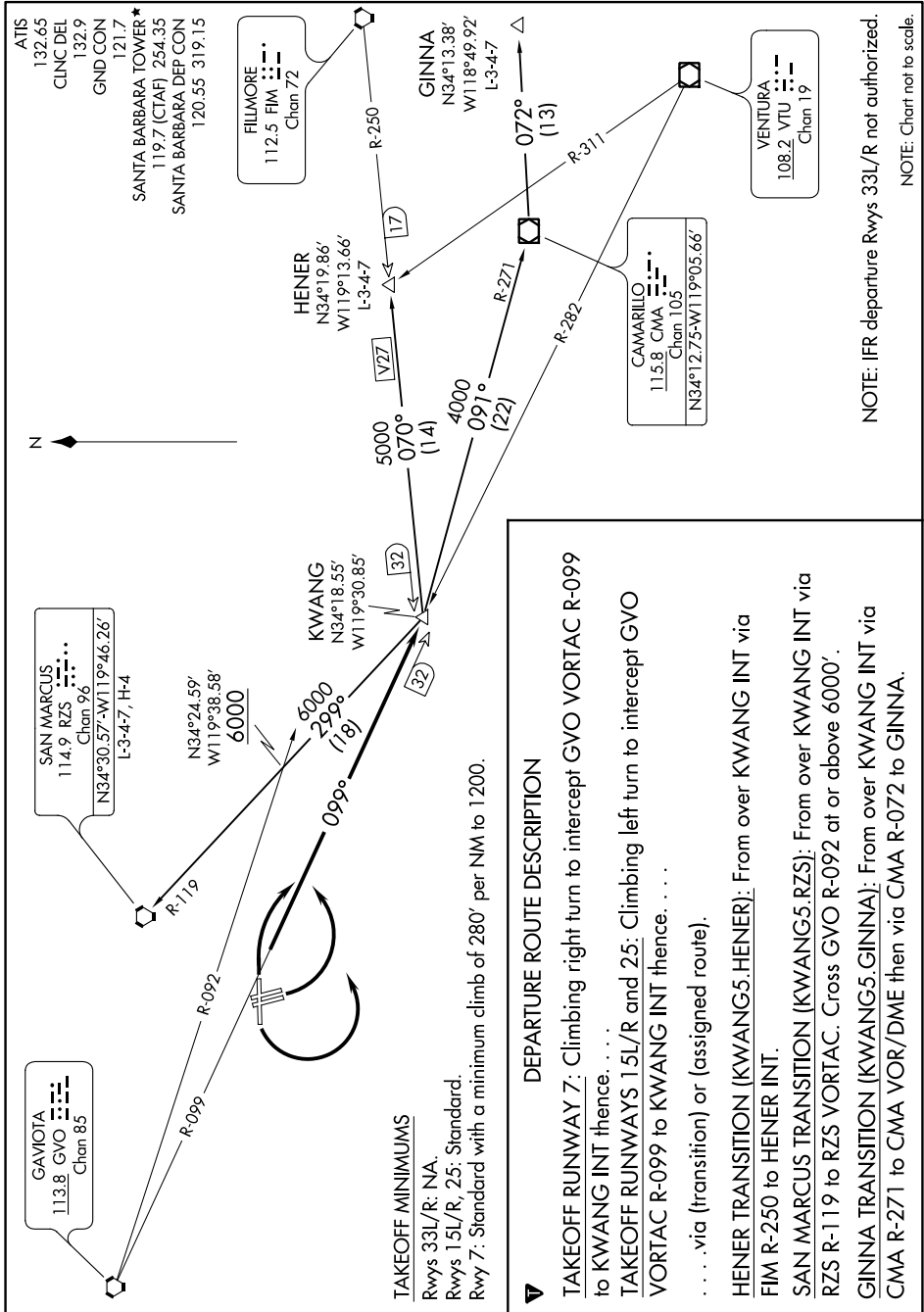


KWANG FIVE DEPARTURE

AL-378 (FAA)

SW-3, 25 FEB 2021 to 25 MAR 2021



TAKEOFF MINIMUMS
Rwys 33L/R: NA
Rwys 15L/R, 25: Standard.
Rwy 7: Standard with a minimum climb of 280' per NM to 1200.

DEPARTURE ROUTE DESCRIPTION

TAKEOFF RUNWAY 7: Climbing right turn to intercept GVO VORTAC R-099 to KWANG INT thence. . . .

TAKEOFF RUNWAYS 15L/R and 25: Climbing left turn to intercept GVO VORTAC R-099 to KWANG INT thence. . . .
. . . . via (transition) or (assigned route).

HENER TRANSITION (KWANG5.HENER): From over KWANG INT via FIM R-250 to HENER INT.

SAN MARCUS TRANSITION (KWANG5.RZS): From over KWANG INT via RZS R-119 to RZS VORTAC. Cross GVO R-092 at or above 6000'.

GINNA TRANSITION (KWANG5.GINNA): From over KWANG INT via CMA R-271 to CMA VOR/DME then via CMA R-072 to GINNA.

SW-3, 25 FEB 2021 to 25 MAR 2021

NOTE: IFR departure Rwys 33L/R not authorized.

NOTE: Chart not to scale.

ATIS
132.65
CLINC DEL
132.9
GND CON
121.7
SANTA BARBARA TOWER*
119.7 (CTAF) 254.35
SANTA BARBARA DEP CON
120.55 319.15

FILMORE
112.5 FIM
Chan 72

GINNA
N34°13.38'
W118°49.92'
L-3-4-7

VENTURA
108.2 VTU
Chan 19

CAMARILLO
115.8 CMA
Chan 105
N34°12.75-W119°05.66'