

SW-3, 25 FEB 2021 to 25 MAR 2021

TOP ALTITUDE:
8000

NOTE: Rwy 7: Do not exceed 210K until established direct MISHN.
NOTE: For non-GPS equipped aircraft on NNAVY TRANSITION,
TNP DME must be operational.

NOTE: RNAV-1.

NOTE: RADAR required for non-GPS equipped aircraft.

NOTE: DME/DME/IRU or GPS required.

NOTE: Turbojets and turboprops only.

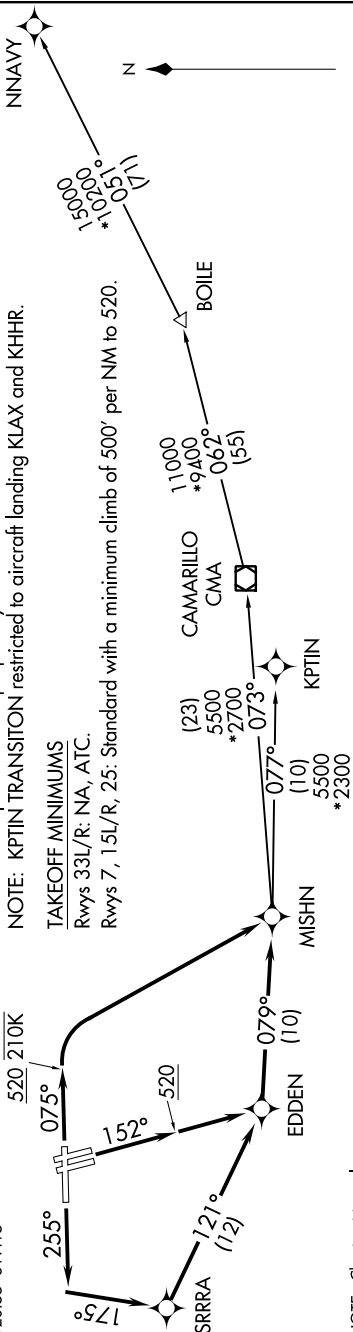
NOTE: KPTIN TRANSITION restricted to aircraft landing KLAX and KHHR.

TAKEOFF MINIMUMS

Rwys 33L/R: NA, ATC.

Rwys 7, 15L/R, 25: Standard with a minimum climb of 500' per NM to 520.

ATIS 132.65
CLNC DEL 132.9
GND CON 121.7
SANTA BARBARA TOWER * 119.7 254.35
SANTA BARBARA DEP CON 120.55 319.15



NOTE: Chart not to scale.

DEPARTURE ROUTE DESCRIPTION

TAKEOFF RUNWAY 7: Climb on heading 075° to 520, then turn right direct MISHN, thence

TAKEOFF RUNWAYS 15L/R: Climb on heading 152° to 520, then direct EDDEN, then on track 079° to MISHN, thence

TAKEOFF RUNWAY 25: Climb on heading 255° to intercept course 175° to SRRRA, then on track 121° to EDDEN, then on track 079° to MISHN, thence

. . . . on (transition). Maintain 8000. Expect final altitude 10 minutes after departure.

BOILE TRANSITION (MISHN3.BOILE)

KPTIN TRANSITION (MISHN3.KPTIN)

NNAVY TRANSITION (MISHN3.NNAVY)

SW-3, 25 FEB 2021 to 25 MAR 2021