

CIITY THREE DEPARTURE (RNAV)

AL-375 (FAA)

SAN FRANCISCO INTL (SFO)
SAN FRANCISCO, CALIFORNIA

SW-2, 25 FEB 2021 to 25 MAR 2021

DEPARTURE ROUTE DESCRIPTION

TAKEOFF RUNWAY 10L: Climb heading 104° to 520, then direct ORYAN, then on track 102° to SAHEY, then on track 101° to cross CIITY at or above 5000. Thence. . . .

TAKEOFF RUNWAY 10R: Climb heading 104° to 520, then direct URRSA, then on track 101° to SAHEY, then on track 101° to cross CIITY at or above 5000. Thence. . . .

TAKEOFF RUNWAYS 19L/19R: Climb heading 194° to 520, then left turn direct to cross CIITY at or above 5000. Thence. . . .

. . . on (transition). Maintain FL190. Expect filed altitude 10 minutes after departure.

- DEDHD TRANSITION (CIITY3.DEDHD)
- GRITFL TRANSITION (CIITY3.GRITFL)
- MOGEE TRANSITION (CIITY3.MOGEE)
- ORRCA TRANSITION (CIITY3.ORRCA)
- SYRAH TRANSITION (CIITY3.SYRAH)
- TIPRE TRANSITION (CIITY3.TIPRE)

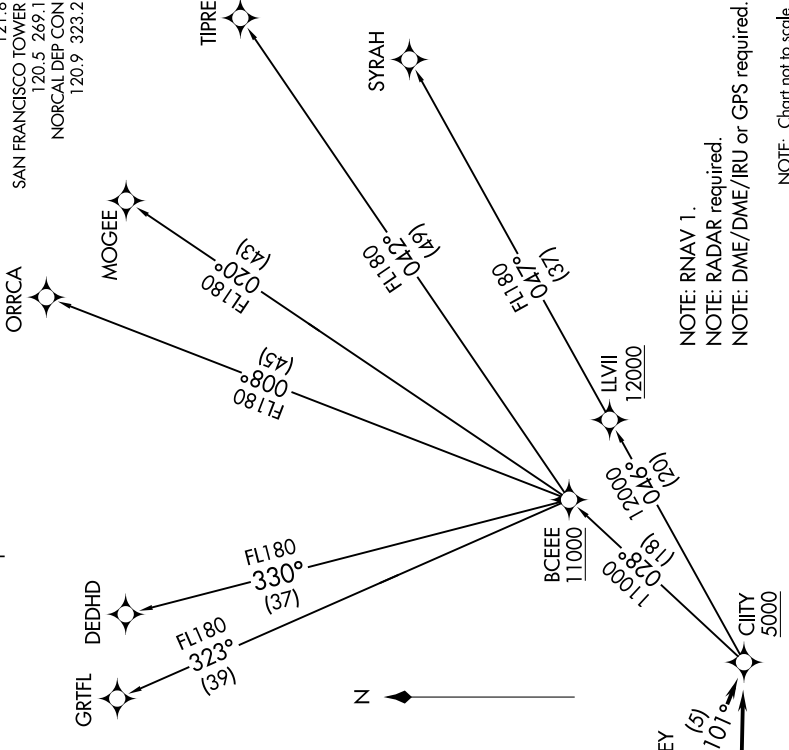
TAKEOFF MINIMUMS

Rwys 10L/R: Standard with minimum climb of 500' per NM to 520.

Rwys 19L/R: Standard with minimum climb of 575' per NM to 2000.

TOP ALTITUDE: FL190

D-ATIS 113.7 115.8 118.85
CLNC DEL 118.2
CPDLC
GND CON 121.8
SAN FRANCISCO TOWER 120.5 269.1
NORCAL DEP CON 120.9 323.2



NOTE: RNAV 1.
NOTE: RADAR required.
NOTE: DME/DME/IRU or GPS required.

NOTE: Chart not to scale.

CIITY THREE DEPARTURE (RNAV)

SW-2, 25 FEB 2021 to 25 MAR 2021