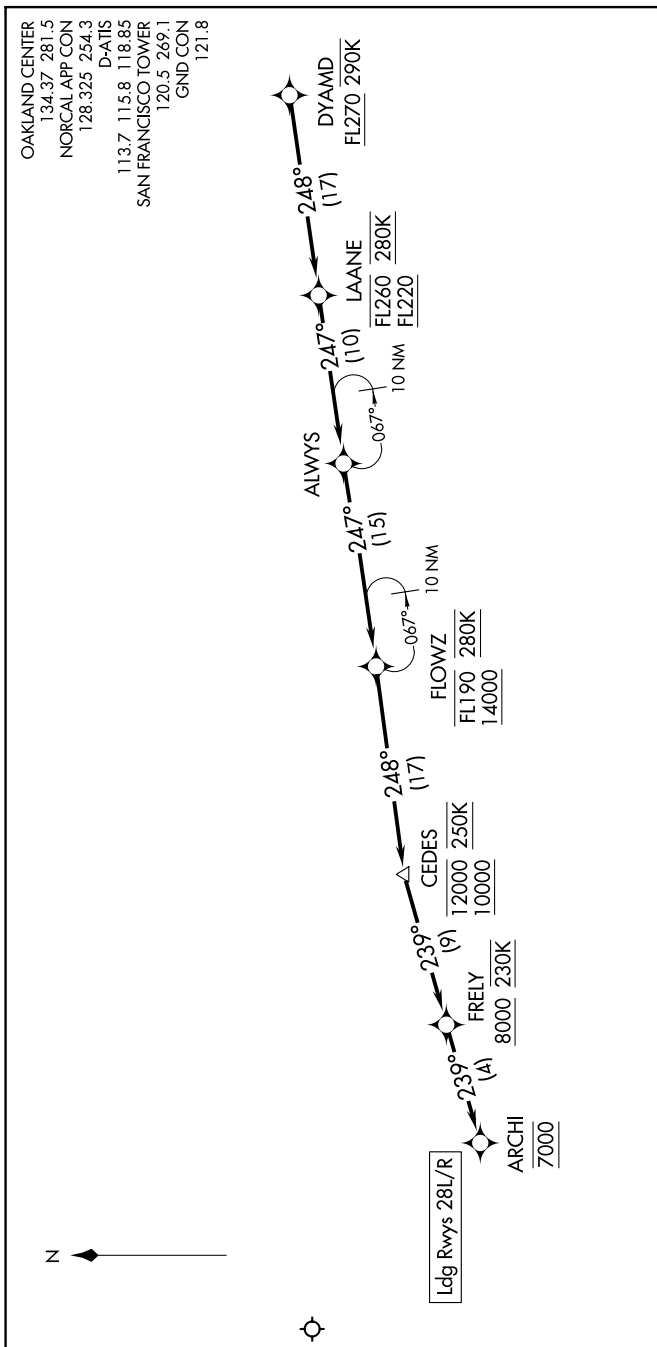


# DYAMD FIVE ARRIVAL (RNAV) Arrival Routes

SW-2, 25 FEB 2021 to 25 MAR 2021



**ARRIVAL ROUTE DESCRIPTION**

From DYAMD on track 248° to cross LAANE between FL220 and FL260 and at 280K, then on track 247° to ALWAYS.

**LANDING RUNWAYS 28L/R:** From ALWAYS on track 247° to cross FLOWZ between 14000 and FL190 and at 280K, then on track 248° to cross CEDES between 10000 and 12000 and at 250K, then on track 239° to cross FRELY at or above 8000 and at 230K, then on track 239° to cross ARCHI at 7000. Expect assigned instrument approach procedure.

- NOTE: RNAV 1.
- NOTE: DME/DME/IRU or GPS required.
- NOTE: Expect to receive "descend via" clearance from Oakland Center. Northern California TRACON will assign landing runway.
- NOTE: RADAR required for non-GPS equipped aircraft.

NOTE: Chart not to scale.

SW-2, 25 FEB 2021 to 25 MAR 2021

# DYAMD FIVE ARRIVAL (RNAV) Arrival Routes