

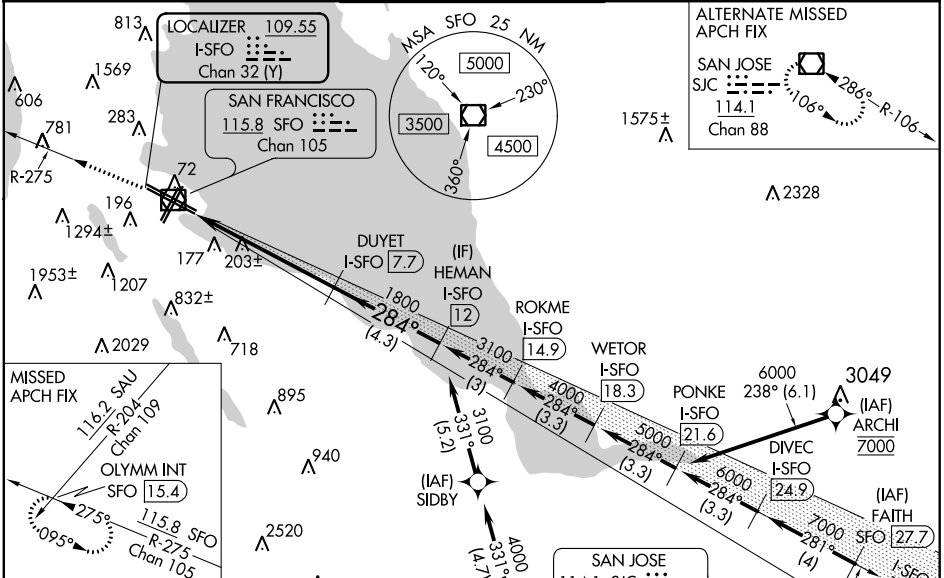
LOC/DME I-SFO 109.55 Chan 32 (Y)	APP CRS 284°	Rwy Idg TDZE Apt Elev	10275 13 13
---	------------------------	-----------------------------	--

ILS RWY 28L (SA CAT II)

SAN FRANCISCO INTL (SFO)

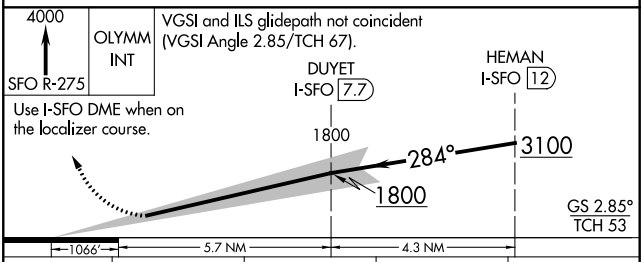
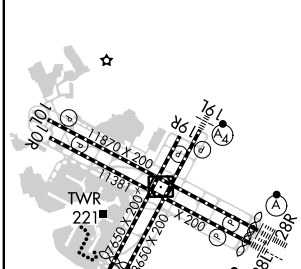
RNAV 1 - GPS or RADAR required for procedure entry. DME required.		MALSR 	MISSED APPROACH: Climb to 4000 on SFO VOR/DME R-275 to OLYMM INT/ SFO 15.4 DME and hold, continue climb-in-hold to 4000. † Missed approach requires minimum climb of 330 feet per NM to 1600.		
Reduced lighting: requires specific OPSPEC, MSPEC, or LOA approval and use of autoland or HUD to touchdown.					

D-ATIS 113.7 115.8 118.85	NORCAL APP CON 134.5 338.2	SAN FRANCISCO TOWER 120.5 269.1	GND CON 121.8	CLNC DEL 118.2	CPDLC
-------------------------------------	--------------------------------------	---	-------------------------	--------------------------	-------



ELEV 13	D	TDZE 13
---------	----------	---------

HIRL All Rwy's
TDZ/CL Rwy's 19L and 28R
REIL Rwy's 1L, 1R and 10L



CATEGORY	A	B	C	D
S-ILS 28L †	RA 106/12 100 DA 113			

SA CAT II ILS - SPECIAL AIRCREW AND AIRCRAFT CERTIFICATION REQUIRED

SW-2, 25 FEB 2021 to 25 MAR 2021

SW-2, 25 FEB 2021 to 25 MAR 2021