

LOC/DME I-GWQ <b>111.7</b> Chan <b>54</b>	APP CRS <b>284°</b>	Rwy Idg TDZE <b>13</b> Apt Elev <b>13</b>	28R <b>11236</b>	28L <b>10275</b>
---	------------------------	---	---------------------	---------------------

# ILS or LOC RWY 28R

SAN FRANCISCO INTL (SFO)

RNAV 1-GPS or RADAR required for procedure entry.

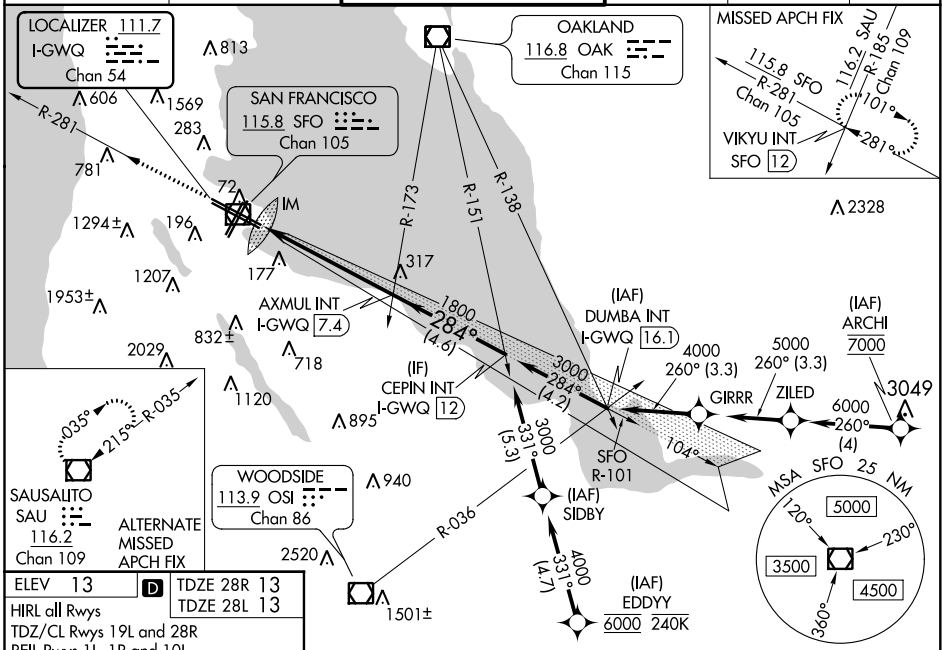
**⚠** Circling NA to Rwy 10L, 10R, 19L, and 19R. Circling Rwy 1L, 1R NA at night. For inop ALS increase S-LOC 28R# Cat C/D visibility to 1 1/2 SM. LOC procedure NA during simultaneous operations. Simultaneous approach authorized. Simultaneous operations require use of vertical guidance; maintain last assigned altitude until established on glideslope.

ALSIF-2  
Rwy 28R

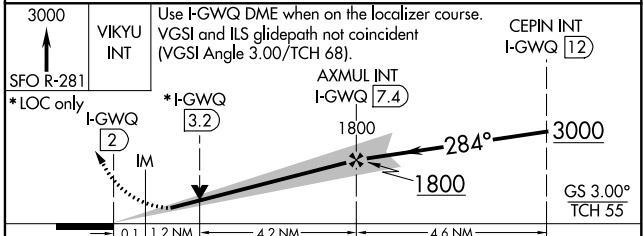
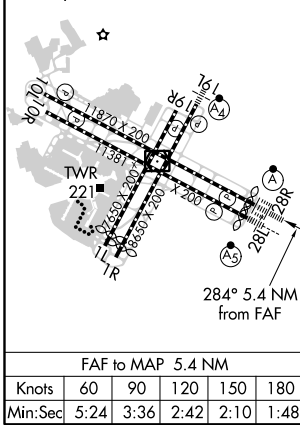
MALSR  
Rwy 28L

MISSED APPROACH: Climb to 3000 on SFO VOR/DME R-281 to VIKYU INT/SFO 12 DME and hold.  
#Missed approach requires minimum climb of 350 feet per NM to 1900; if unable to meet climb gradient, see ILS or LOC RWY 28L.

D-ATIS <b>113.7 115.8 118.85</b>	NORCAL APP CON <b>134.5 338.2</b>	SAN FRANCISCO TOWER <b>120.5 269.1</b>	GND CON <b>121.8</b>	CLNC DEL <b>118.2</b>	CPDLC
-------------------------------------	--------------------------------------	---	-------------------------	--------------------------	-------



ELEV <b>13</b>	TDZE 28R <b>13</b>
HIRL all Rwys	TDZE 28L <b>13</b>
TDZ/CL Rwy 19L and 28R	
REIL Rwy 1L, 1R and 10L	



CATEGORY	A		B		C		D
S-ILS 28R#	213/18				200 (200-1/2)		
S-LOC 28R#	480/24		467 (500-1/2)		480/50 467 (500-1)		
SIDESTEP # 28L	480/55 467 (500-1)				480-1 1/2 467 (500-1 1/2)		
CIRCLING	740-1		960-1 1/4		1560-3		NA
	727 (800-1)		947 (1000-1 1/4)		1547 (1600-3)		

SW-2, 25 FEB 2021 to 25 MAR 2021

SW-2, 25 FEB 2021 to 25 MAR 2021