

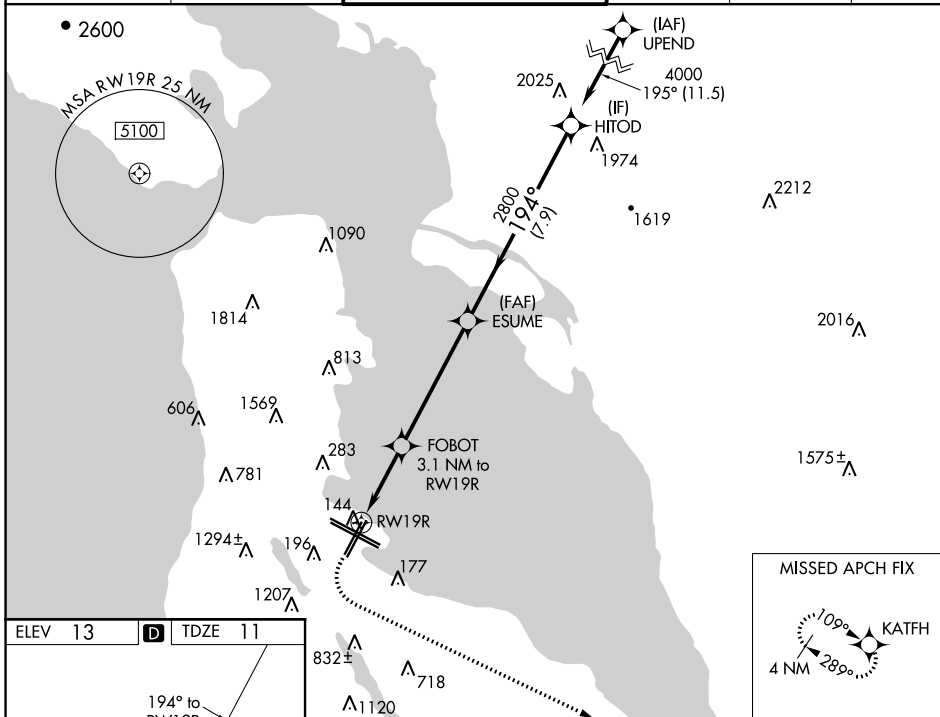
WAAS CH 53533 W19B	APP CRS 194°	Rwy Idg TDZE 11 Apt Elev 13	7650
--	------------------------	---	-------------

RNAV (GPS) RWY 19R

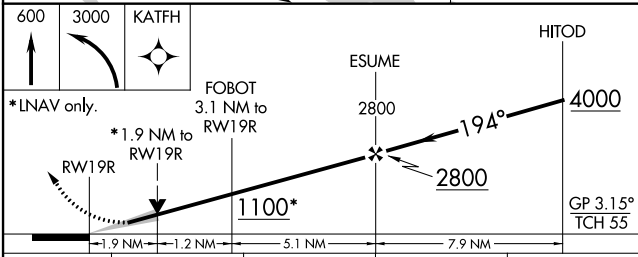
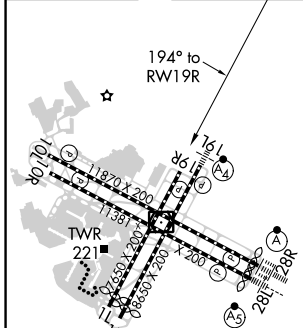
SAN FRANCISCO INTL (SFO)

RNP APCH.	<p>▼ LNAV procedure NA during simultaneous operations. For uncompensated Baro-VNAV systems, LNAV/VNAV NA below 3°C or above 42°C. Simultaneous approach authorized. Simultaneous operations require use of vertical guidance; maintain last assigned altitude until established on glidepath. Simultaneous approach NA below 28°C (52°F).</p>	<p>MISSED APPROACH: Climb to 600 then climbing left turn to 3000 direct KATFH and hold.</p>
-----------	---	---

D-ATIS 113.7 115.8 118.85	NORCAL APP CON 134.5 338.2	SAN FRANCISCO TOWER 120.5 269.1	GND CON 121.8	CLNC DEL 118.2	CPDLC
---	--------------------------------------	---	-------------------------	--------------------------	-------



ELEV 13	D	TDZE 11
---------	----------	---------



CATEGORY	A	B	C	D
LPV DA	382/55 371 (400-1)			
LNAV/VNAV DA	449-1¼ 438 (500-1¼)			
LNAV MDA	660/55	649 (700-1)	660-1⅞	649 (700-1⅞)

TDZ/CL Rwy's 19L and 28R
REIL Rwy's 1L, 1R and 10L
HIRL all Rwy's