

(SAHEY3.SAHEY) 17341

SAHEY THREE DEPARTURE (RNAV)

AL-375 (FAA)

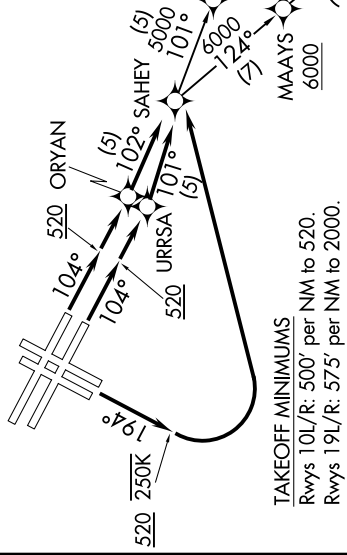
SAN FRANCISCO INTL (SFO)
SAN FRANCISCO, CALIFORNIA

SW-2, 25 FEB 2021 to 25 MAR 2021

**TOP ALTITUDE:
FL190**

D-ATIS 113.7 115.8 118.85
CLNC DEL 118.2
CPDLC
GND CON 121.8
SAN FRANCISCO TOWER 120.5 269.1
NORCAL DEP CON 135.1 307.2

NOTE: RNAV 1.
NOTE: DME/DME/IRU or GPS required.
NOTE: RADAR required.
NOTE: Rwy's 19L/R do not exceed 250K until established direct SAHEY.



TAKEOFF MINIMUMS
Rwys 10L/R: 500' per NM to 520.
Rwys 19L/R: 575' per NM to 2000.

DEPARTURE ROUTE DESCRIPTION

TAKEOFF RUNWAY 10L: Climb heading 104° to 520, then direct ORYAN, then on track 102° to SAHEY, thence

TAKEOFF RUNWAY 10R: Climb heading 104° to 520, then direct URRSA, then on track 101° to SAHEY, thence

TAKEOFF RUNWAYS 19L/R: Climb heading 194° to 520, then left turn direct to SAHEY, thence

. . . . on (transition). Maintain FL190, expect filed altitude 10 minutes after departure.

CISCO TRANSITION (SAHEY3.CISCO)
EBAYE TRANSITION (SAHEY3.EBAYE)
LOSHN TRANSITION (SAHEY3.LOSHN)
NITELL TRANSITION (SAHEY3.NITELL)

NOTE: Chart not to scale.

SW-2, 25 FEB 2021 to 25 MAR 2021

SAHEY THREE DEPARTURE (RNAV)

(SAHEY3.SAHEY) 20AUG15

SAN FRANCISCO, CALIFORNIA
SAN FRANCISCO INTL (SFO)