

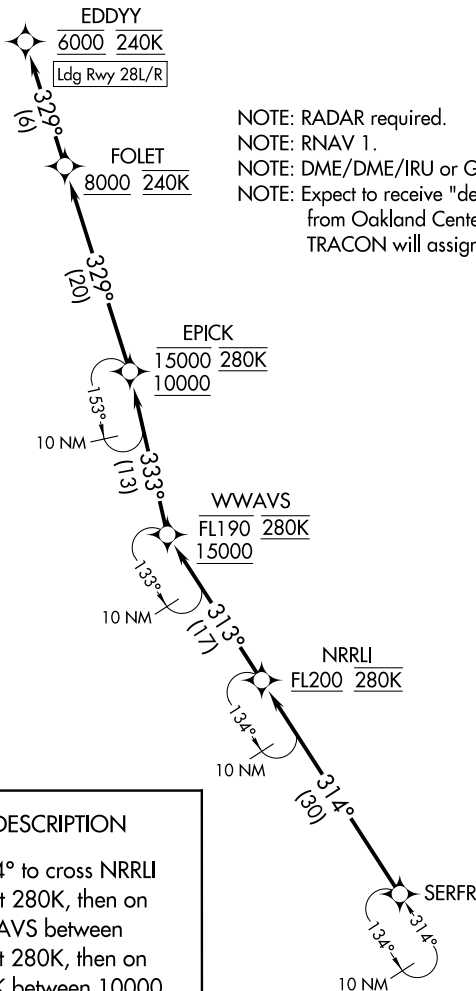
(SERFR.SERFR4) 19339

# SERFR FOUR ARRIVAL (RNAV)

AL-375 (FAA)

SAN FRANCISCO INTL (SFO)  
SAN FRANCISCO, CALIFORNIA

OAKLAND CENTER  
 134.55 290.5  
 NORCAL APP CON  
 128.575 254.25  
 D-ATIS  
 113.7 115.8 118.85  
 SAN FRANCISCO TOWER  
 120.5 269.1  
 GND CON  
 121.8



NOTE: RADAR required.  
 NOTE: RNAV 1.  
 NOTE: DME/DME/IRU or GPS required.  
 NOTE: Expect to receive "descend via" clearance from Oakland Center. Northern California TRACON will assign landing runway.

## ARRIVAL ROUTE DESCRIPTION

From SERFR on track 314° to cross NRRLI at or above FL200 and at 280K, then on track 313° to cross WWAVS between 15000 and FL190 and at 280K, then on track 333° to cross EPICK between 10000 and 15000 and at 280K, then on track 329° to cross FOLET at or above 8000 and at 240K, then on track 329° to cross EDDYY at 6000 and at 240K. Expect assigned instrument approach (Rwy 28L/R).

NOTE: Chart not to scale.

SW-2, 25 FEB 2021 to 25 MAR 2021

SW-2, 25 FEB 2021 to 25 MAR 2021

# SERFR FOUR ARRIVAL (RNAV)

(SERFR.SERFR4) 05DEC19

SAN FRANCISCO, CALIFORNIA  
SAN FRANCISCO INTL (SFO)