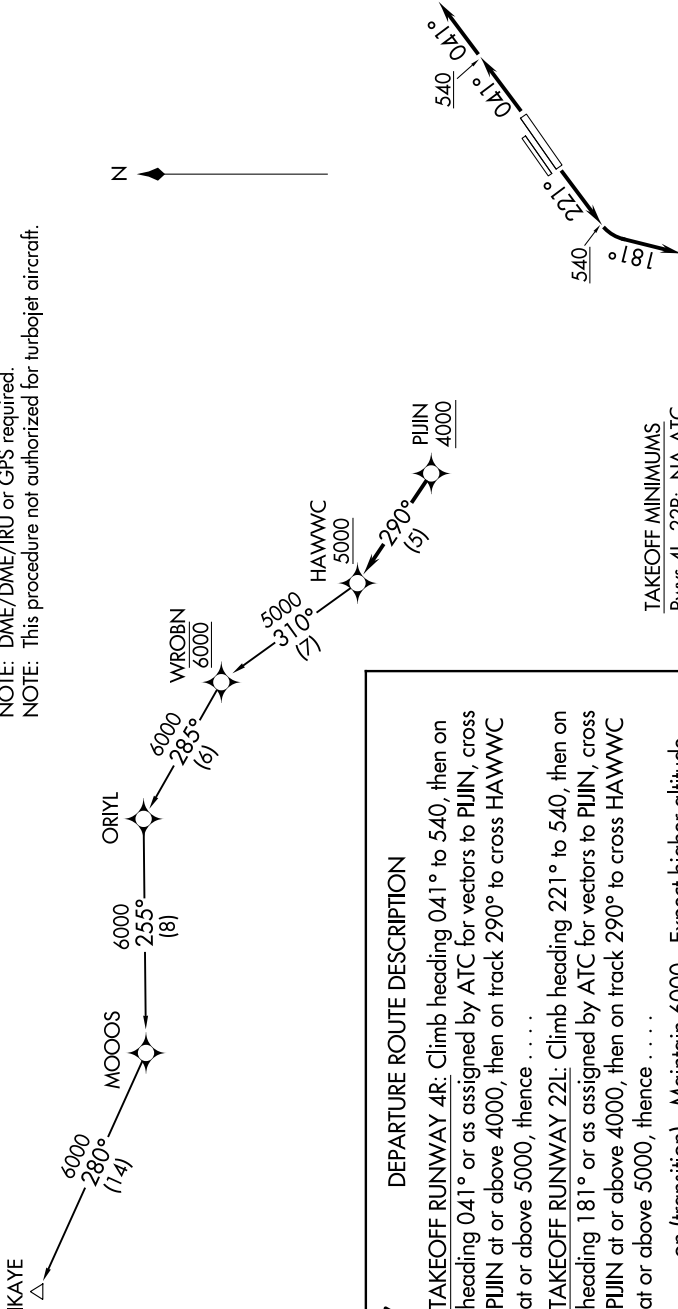


SW-3, 25 FEB 2021 to 25 MAR 2021

**TOP ALTITUDE:**  
6000



NOTE: RADAR required.  
 NOTE: RNAV 1.  
 NOTE: DME/DME/IRU or GPS required.  
 NOTE: This procedure not authorized for turbojet aircraft.

GND CON  
 126.95 257.95  
 LOS ALAMITOS TOWER\*  
 123.85 251.15  
 SOCAL DEP CON  
 125.35 316.125

TAKEOFF MINIMUMS  
 Rwy 4L, 22R: NA-ATC.  
 Rwy 4R, 22L: Standard.

**DEPARTURE ROUTE DESCRIPTION**

**TAKEOFF RUNWAY 4R:** Climb heading 041° to 540, then on heading 041° or as assigned by ATC for vectors to PUJIN, cross PUJIN at or above 4000, then on track 290° to cross HAWWC at or above 5000, thence . . . .

**TAKEOFF RUNWAY 22L:** Climb heading 221° to 540, then on heading 181° or as assigned by ATC for vectors to PUJIN, cross PUJIN at or above 4000, then on track 290° to cross HAWWC at or above 5000, thence . . . .

. . . . on (transition). Maintain 6000. Expect higher altitude 10 minutes after departure.

IKAYE TRANSITION (HAWWC3.IKAYE)

NOTE: Chart not to scale.

SW-3, 25 FEB 2021 to 25 MAR 2021