

LOS ALAMITOS, CALIFORNIA

RNAV (GPS) RWY 22L

18032

APCH CRS 223°	Rwy Idg 2001
	TDZE 35
	Arpt Elev 35

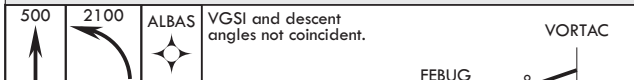
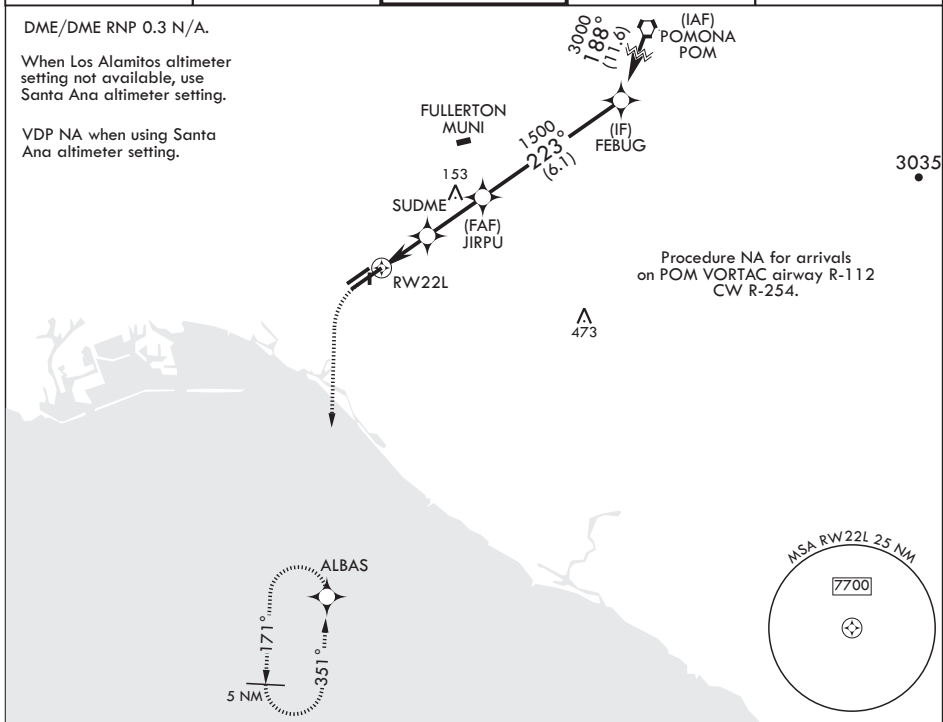
AL-953 (USA)

LOS ALAMITOS AAF (KSLI)

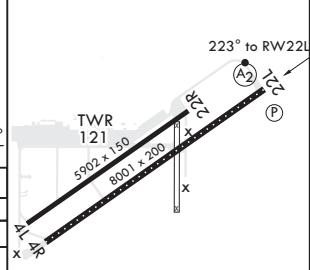
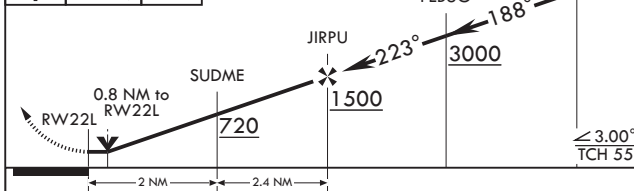
NA
 * When ALS inop, increase CAT D vis to 1 mile.
 ** When ALS inop using SANTA ANA altimeter setting, increase CAT D vis to 1 1/8 mile.
 *** Circling not authorized N of Rwy 4L-22R.

SALS
 MISSED APPROACH: Climb to 500 then climbing left turn to 2100 direct ALBAS and hold.

ATIS ★ 118.875 379.975	SOCAL APP CON 125.35 316.125	TOWER ★ 123.85 251.15	GND CON 126.95 257.95	ASR/PAR
---------------------------	---------------------------------	--------------------------	--------------------------	---------



ELEV 35	TDZE 35
---------	---------



CATEGORY	A	B	C	D
LNAV MDA*	380-3/4		345	(400-3/4)
C CIRCLING***	440-1 405 (500-1)	500-1 465 (500-1)	560-1 1/2 525 (600-1 1/2)	680-2 645 (700-2)
SANTA ANA ALTIMETER SETTING MINIMUMS				
LNAV MDA**	420-3/4	385 (400-3/4)	420-7/8	385 (400-7/8)
C CIRCLING***	480-1 445 (500-1)	540-1 505 (600-1)	600-1 1/2 565 (600-1 1/2)	720-2 685 (700-2)

HIRL Rwy 4R-22L
 MIRL Rwy 4L-22R
 REIL Rwy 22L

LOS ALAMITOS, CALIFORNIA
 Amdt 1 07DEC17

33°47'N - 118°03'W

LOS ALAMITOS AAF (KSLI)

RNAV (GPS) RWY 22L

SW-3, 25 FEB 2021 to 25 MAR 2021

SW-3, 25 FEB 2021 to 25 MAR 2021