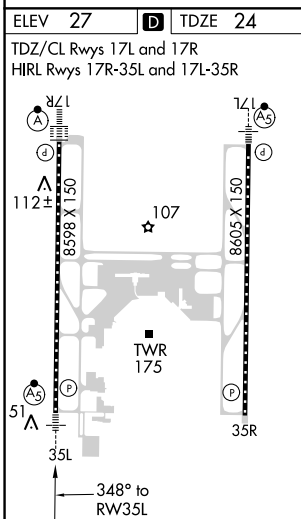
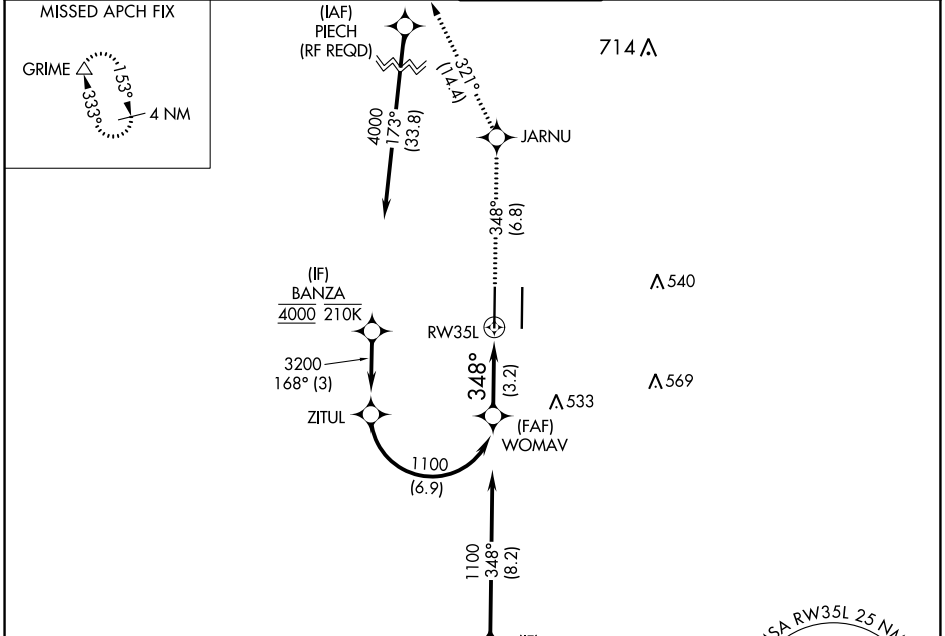


RNAV (RNP) Z RWY 35L

SACRAMENTO INTL (SMF)

APP CRS	Rwy Idg	8598
348°	TDZE	24
	Apt Elev	27

RNP AR APCH.		MALSR	MISSED APPROACH: Climb to 2000 on track 348° to JARNU and track 321° to GRIME and hold.		
▼ For uncompensated Baro-VNAV systems, procedure NA below -4°C or above 54°C. For inop ALS, increase RNP 0.30 all Cats visibility to RVR 5000.					
D-ATIS	NORCAL APP CON	CAPITOL TOWER	GND CON	CLNC DEL	CPDLC
126.75	125.4 259.1 (W-NE) 125.25 257.9 (SW) 127.4 317.5 (E-SE)	125.7 256.7	121.7 256.7	121.1 256.7	



VGSI and RNAV glidepath not coincident (VGSI Angle 3.00/TCH 76).

WOMAV	2000	JARNU	GRIME
1100	↑ tr 348°	\triangle tr 321°	\triangle

See planview for multiple IF locations.

GP 3.00° TCH 59

1100 348° RW35L

3.2 NM

CATEGORY	A	B	C	D
RNP 0.30 DA	327/26 303 (300-½)			

AUTHORIZATION REQUIRED

SW-2, 25 FEB 2021 to 25 MAR 2021

SW-2, 25 FEB 2021 to 25 MAR 2021