


LOC/DME I-SMX	APP CRS	Rwy Idg	<b>8004</b>
<b>108.9</b>	<b>120°</b>	TDZE	<b>230</b>
Chan <b>26</b>		Apt Elev	<b>261</b>

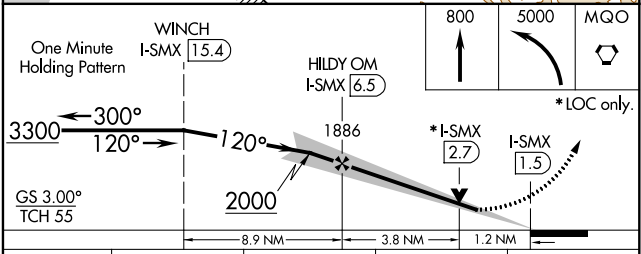
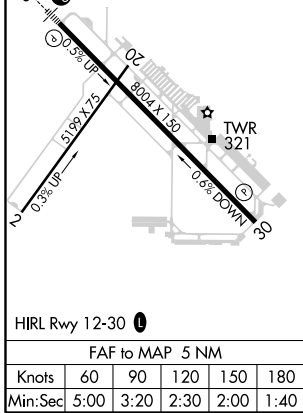
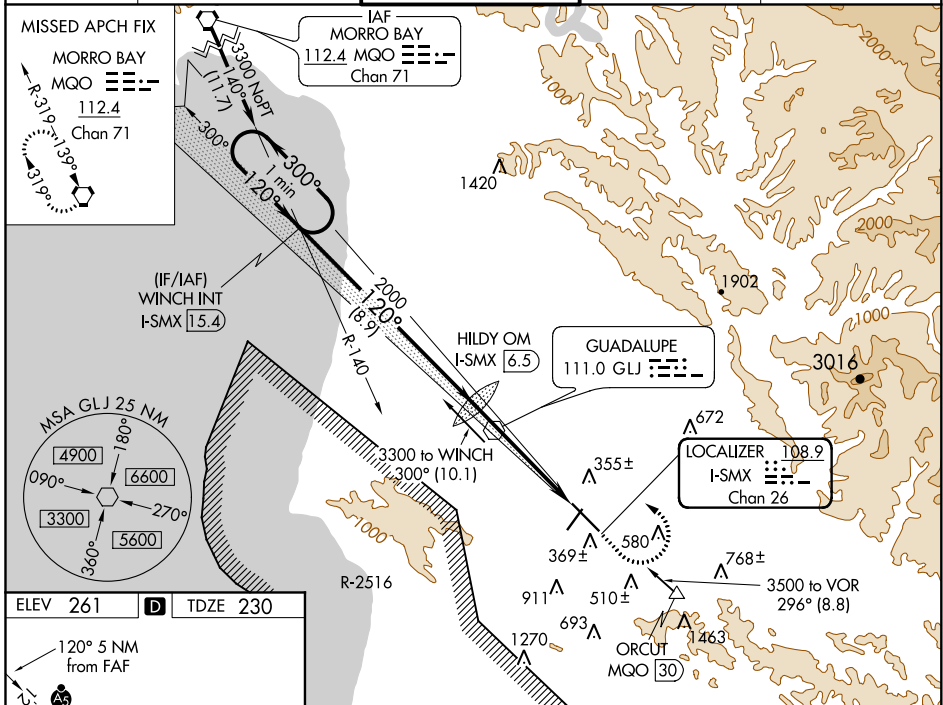
# ILS or LOC RWY 12

SANTA MARIA PUBLIC/CAPTAIN G ALLAN HANCOCK FIELD (SMX)

**Night Landing: Rwy 2 NA. VDP NA with Vandenberg altimeter setting.**  
 When local altimeter setting not received, use Vandenberg altimeter setting and increase all DA 43 feet, and all MDA 60 feet, increase S-LOC 12 Cat C/D visibility to 1¾. For inop MALSR, increase S-LOC 12 Cat C/D visibility to 1¾ mile.  
 # RVR 1800 authorized with the use of FD or AP or HUD to DA.

**MALSR**  
  
**MISSED APPROACH:** Climb to 800, then climbing left turn to 5000 direct MQO VORTAC and hold.

ATIS <b>121.15</b>	SANTA BARBARA APP CON* <b>124.15 327.8</b>	SANTA MARIA TOWER* <b>118.3 (CTAF) 0 239.25</b>	GND CON <b>121.9</b>	UNICOM <b>122.95</b>
-----------------------	---	--	-------------------------	-------------------------



CATEGORY	A	B	C	D
S-ILS 12#	430/24 200 (200-½)			
S-LOC 12	680/24	450 (500-½)	680/50	450 (500-1)
CIRCLING	860-1	599 (600-1)	860-1½	1320-3 1059 (1100-3)

SW-3, 25 FEB 2021 to 25 MAR 2021

SW-3, 25 FEB 2021 to 25 MAR 2021