


LOC I-SNS 108.5	APP CRS 311°	Rwy ldg TDZE Apt Elev	4825 79 84
---------------------------	------------------------	-----------------------------	---------------------------------------

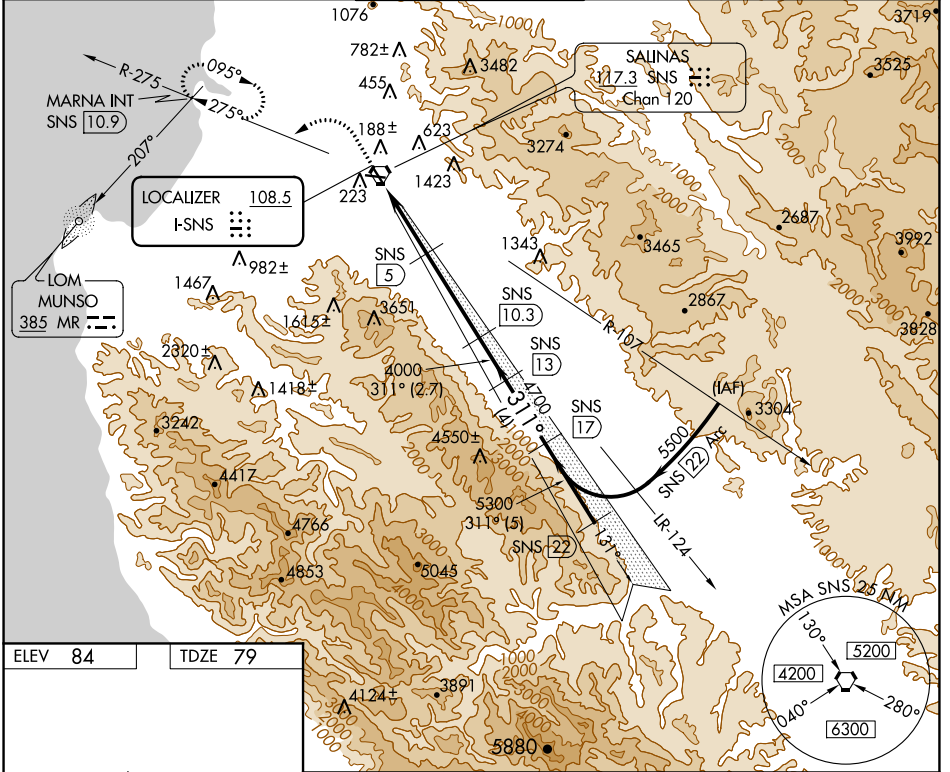
LOC/DME RWY 31

SALINAS MUNI (SNS)

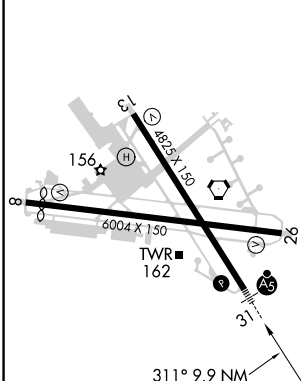
▼ For inoperative MALSR increase S-LOC 31 Cat D visibility to RVR 5000.
▲ Simultaneous reception of I-SNS and SNS DME required.


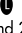
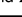
MALSR  MISSED APPROACH: Climb to 800, then climbing left turn to 3000 via SNS R-275 to MARNA INT/10.9 DME and hold.

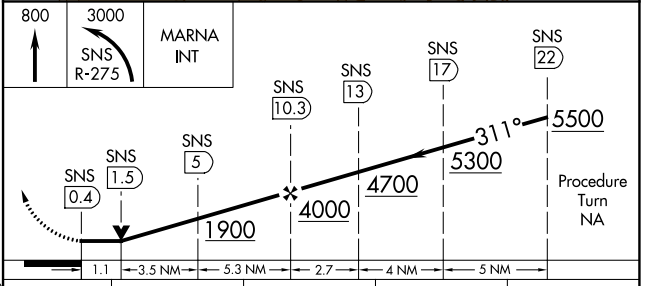
ATIS 124.85	NORCAL APP CON 133.0 251.15	SALINAS TOWER* 119.525 (CTAF) 0 239.3	GND CON 121.7	UNICOM 122.95
-----------------------	---------------------------------------	---	-------------------------	-------------------------



ELEV 84	TDZE 79
---------	---------



HIRL Rwy 13-31 
 MIRL Rwy 8-26 
 REIL Rws 13 and 26 



CATEGORY	A	B	C	D
S-31	420/24	341 (400-½)		420/40 341 (400-¾)
CIRCLING	560-1 476 (500-1)	580-1 496 (500-1)	580-1½ 496 (500-1½)	780-2¼ 696 (700-2¼)

SW-2, 25 FEB 2021 to 25 MAR 2021

SW-2, 25 FEB 2021 to 25 MAR 2021