

APP CRS	Rwy Idg	4825
132°	TDZE	85
	Apt Elev	85

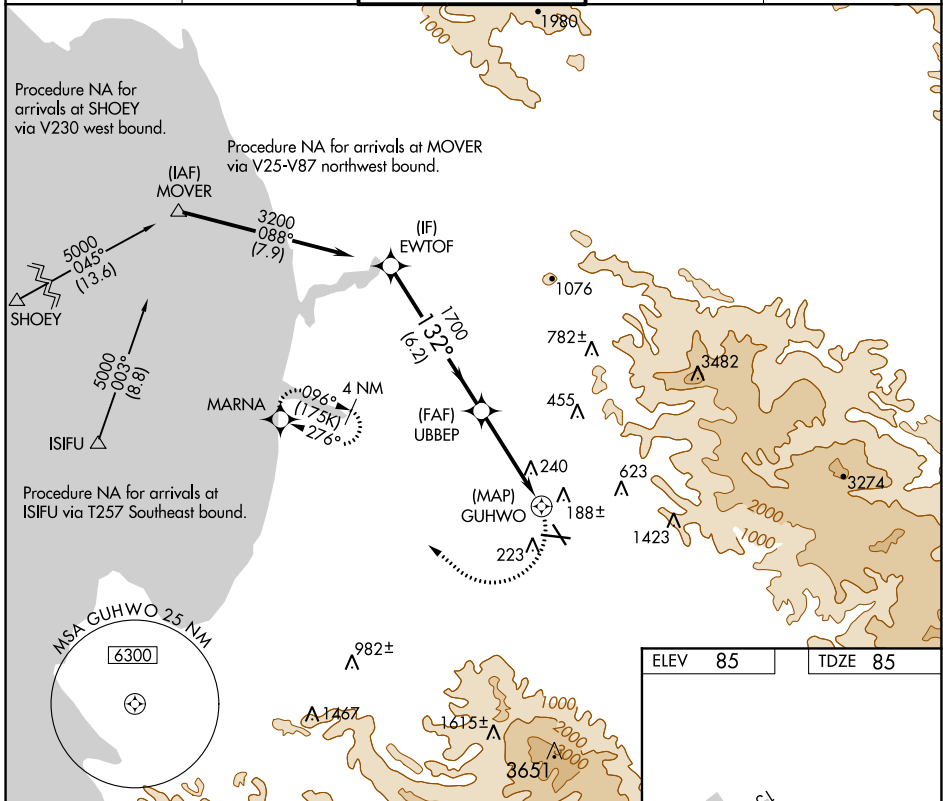
RNAV (GPS) RWY 13

SALINAS MUNI (SNS)

▽ DME/DME RNP-0.3 NA. Visibility reduction by helicopters NA.
⚠ When local altimeter setting not received, use Monterey Rgnl altimeter setting and increase all MDA 60 feet and increase LNAV Cat C and D visibility ¼ mile.

MISSED APPROACH: Climbing right turn to 3000 direct MARNA and hold.

ATIS 124.85	NORCAL APP CON 133.0 251.15	SALINAS TOWER ★ 119.525 (CTAF) 0 239.3	GND CON 121.7	UNICOM 122.95
-----------------------	---------------------------------------	--	-------------------------	-------------------------



SW-2, 25 FEB 2021 to 25 MAR 2021

SW-2, 25 FEB 2021 to 25 MAR 2021

