

APP CRS	Rwy Idg	4825
312°	TDZE	82
	Apt Elev	85

RNAV (GPS) Y RWY 31

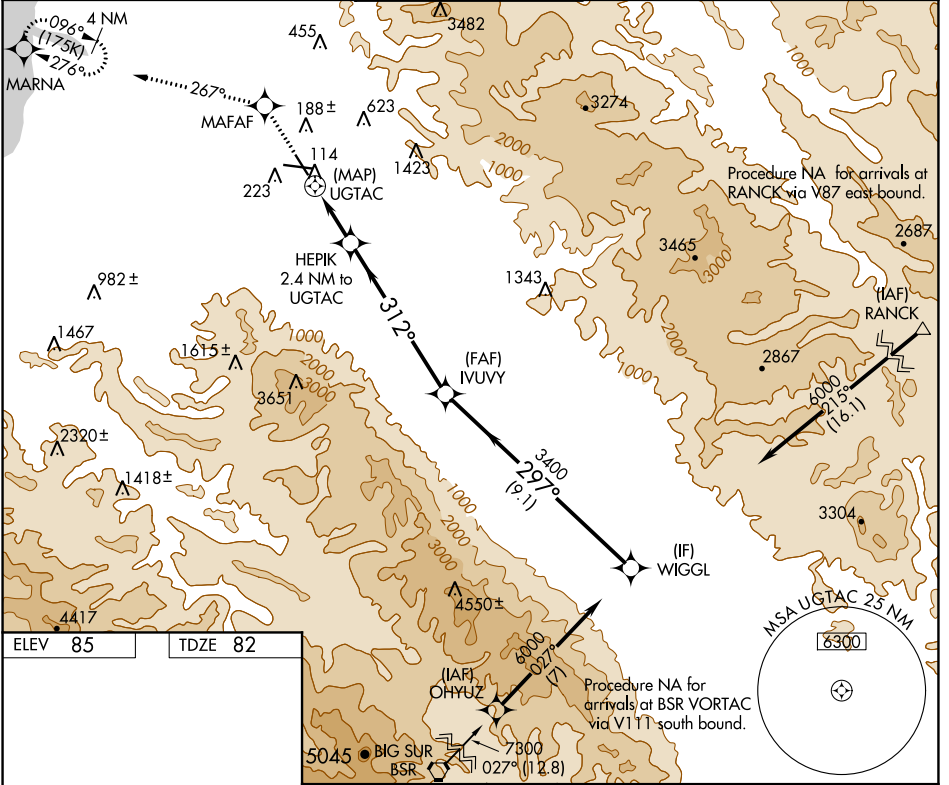
SALINAS MUNI (SNS)

▼ For inoperative MALSR, increase LNAV Cat D visibility to RVR 6000.
▲ DME/DME RNP-0.3 NA. When local altimeter not received, use Monterey Rgnl altimeter setting and increase all MDA 60 feet and increase LNAV Cat C visibility to RVR 4000.

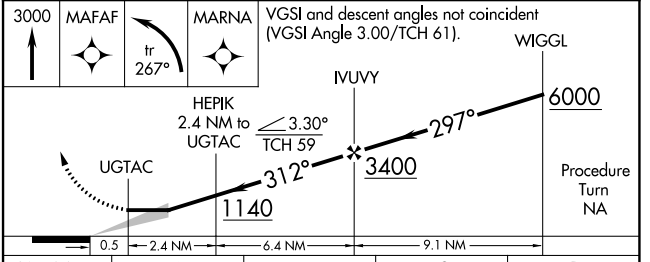
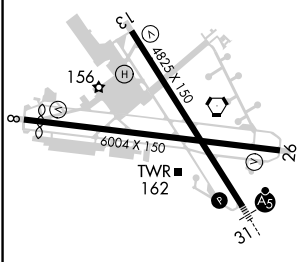


MISSED APPROACH: Climb to 3000 direct MAFAP and left turn via track 267° to MARNA and hold.

ATIS 124.85	NORCAL APP CON 133.0 251.15	SALINAS TOWER * 119.525 (CTAF) 239.3	GND CON 121.7	UNICOM 122.95
-----------------------	---------------------------------------	--	-------------------------	-------------------------



ELEV 85	TDZE 82
---------	---------



CATEGORY	A	B	C	D
LNAV MDA	440/24 358 (400-½)			440/50 358 (400-1)
CIRCLING	500-1 415 (500-1)	540-1 455 (500-1)	540-1½ 455 (500-1½)	760-2¼ 675 (700-2¼)

HIRL Rwy 13-31
 MIRL Rwy 8-26
 REIL Rwy 13 and 26

SW-2, 25 FEB 2021 to 25 MAR 2021

SW-2, 25 FEB 2021 to 25 MAR 2021