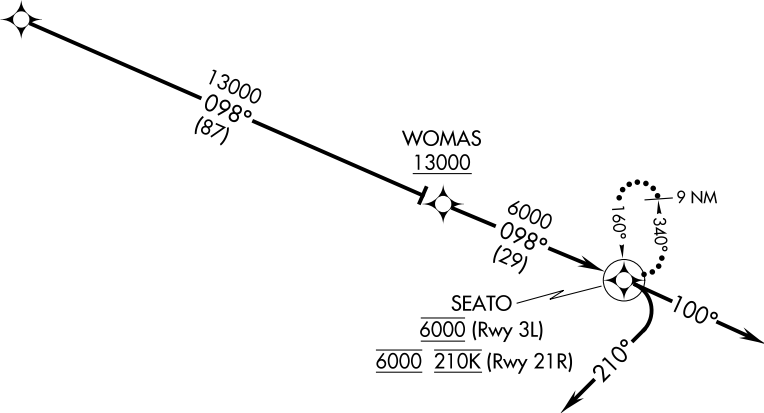


TRAVIS APP CON  
126.6 281.45 (N)  
119.9 322.325 (S)  
TRAVIS TOWER  
120.75 254.4  
GND CON  
121.8 289.4  
D-ATIS  
135.55 292.125

PEBL  
FL290



SW-2, 25 FEB 2021 to 25 MAR 2021

SW-2, 25 FEB 2021 to 25 MAR 2021

- NOTE: RNAV 1.
- NOTE: RADAR required.
- NOTE: DME/DME/IRU or GPS required.

NOTE: Chart not to scale.

ARRIVAL ROUTE DESCRIPTION

From PEBL on track 098° to cross WOMAS at/above 13000, thence. . . .

. . . . LANDING RUNWAY 3L: From WOMAS on track 098° to cross SEATO at 6000, then right turn heading 210°, expect RADAR vectors to final approach course.

. . . . LANDING RUNWAY 21R: From WOMAS on track 098° to cross SEATO at 6000, at 210K, then on heading 100°, expect RADAR vectors to final approach course.

LOST COMMUNICATIONS: From SEATO, execute ILS or LOC RWY 21R or TACAN RWY 3L approach. If unable hold at SEATO as depicted, maintain 6000.