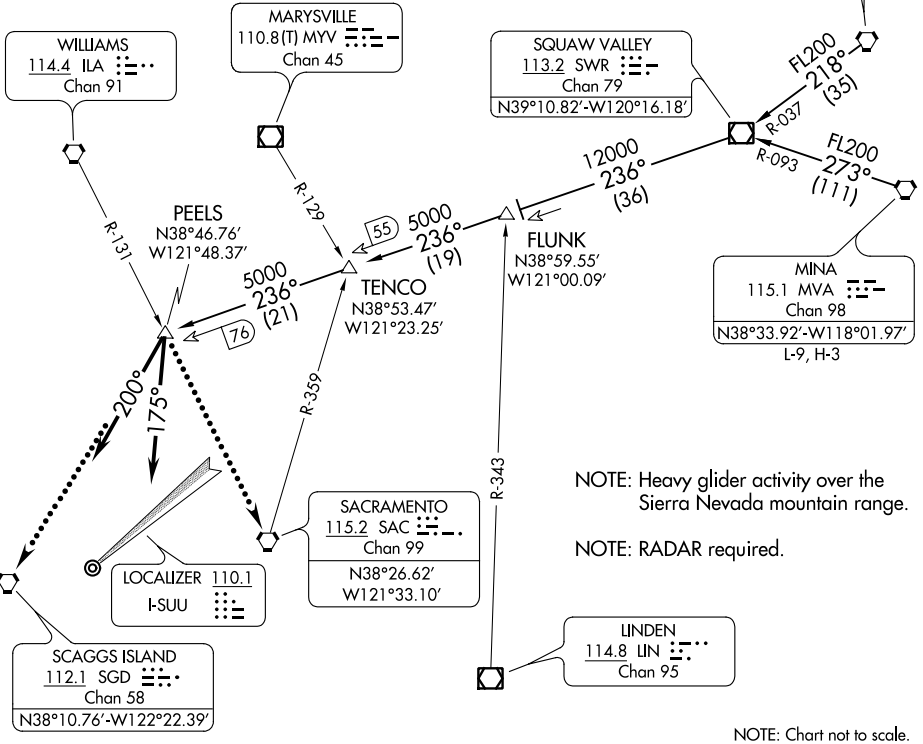


TRAVIS APP CON
126.6 281.45 (N)
119.9 322.325 (S)
D-ATIS
135.55 292.125



SW-2, 25 FEB 2021 to 25 MAR 2021

SW-2, 25 FEB 2021 to 25 MAR 2021

NOTE: Heavy glider activity over the Sierra Nevada mountain range.
NOTE: RADAR required.

NOTE: Chart not to scale.

ARRIVAL ROUTE DESCRIPTION

- MINA TRANSITION (MVA.SWR3):** From over MVA VORTAC on MVA R-273 and SWR R-093 to SWR VOR/DME then on SWR R-236 to PEELS INT. Thence. . .
- MUSTANG TRANSITION (FMG.SWR3):** From over FMG VORTAC on FMG R-218 and SWR R-037 to SWR VOR/DME then on SWR R-236 to PEELS INT. Thence. . .
- LANDING RUNWAYS 3L/R**
. . . Depart PEELS INT heading 200° expect RADAR vectors to final approach course.
- LANDING RUNWAYS 21L/R**
. . . Depart PEELS INT heading 175° expect RADAR vectors to final approach course.
- LOST COMMUNICATIONS**
- RUNWAY 3L:** From over PEELS INT proceed direct SGD VORTAC. Expect ILS or LOC RWY 3L.
- RUNWAY 21L:** From over PEELS INT proceed direct SAC VORTAC. Expect ILS or LOC RWY 21L.