

LOC I-BZQ 111.5	APP CRS 320°	Rwy Idg 5701
		TDZE 179
		Apt Elev 187

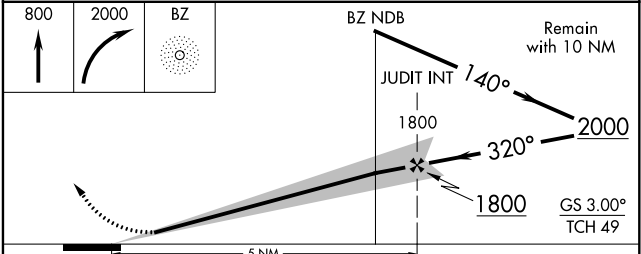
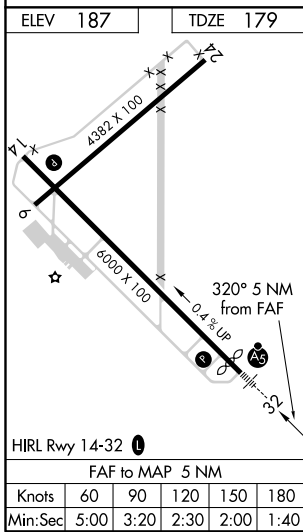
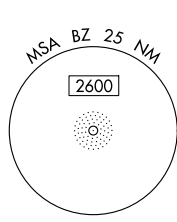
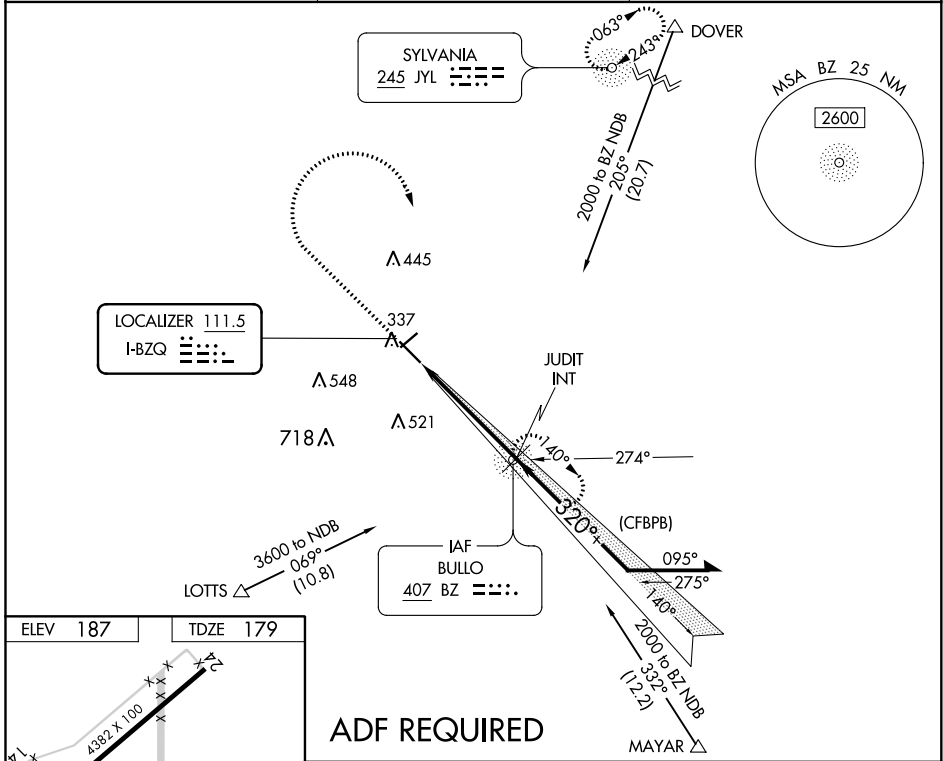
ILS or LOC RWY 32
STATESBORO-BULLOCH COUNTY (TBR)

⚠ Inop table does not apply to S-ILS 32. ADF required. When local altimeter setting not received, use Sylvania altimeter setting and increase all DA 28 feet and increase all MDA 40 feet, increase Circling Cat C visibility ¼ mile. Helicopter visibility reduction below ¾ SM NA.

MALSR

MISSED APPROACH: Climb to 800 then climbing right turn to 2000 direct BULLO NDB and hold.

AWOS-3 119.025	SAVANNAH APP CON * 118.4 354.0	UNICOM 122.725 (CTAF) 0
---------------------------------	---	--



CATEGORY	A	B	C	D
S-ILS 32	433-¾ 254 (300-¾)			
S-LOC 32	640-¾ 461 (500-¾)	840-1 640-1	840-1¾ 461 (500-1)	860-2¼ 673 (700-2¼)
CIRCLING	640-1 453 (500-1)	840-1 653 (700-1)	840-1¾ 653 (700-1¾)	860-2¼ 673 (700-2¼)

SE-4, 25 FEB 2021 to 25 MAR 2021

SE-4, 25 FEB 2021 to 25 MAR 2021