

| | | | |
|--|------------------------|-----------------------------|---|
| WAAS CH 69201 W30A | APP CRS 297° | Rwy Idg TDZE Apt Elev | 3740 193 193 |
|--|------------------------|-----------------------------|---|

RNAV (GPS) RWY 30

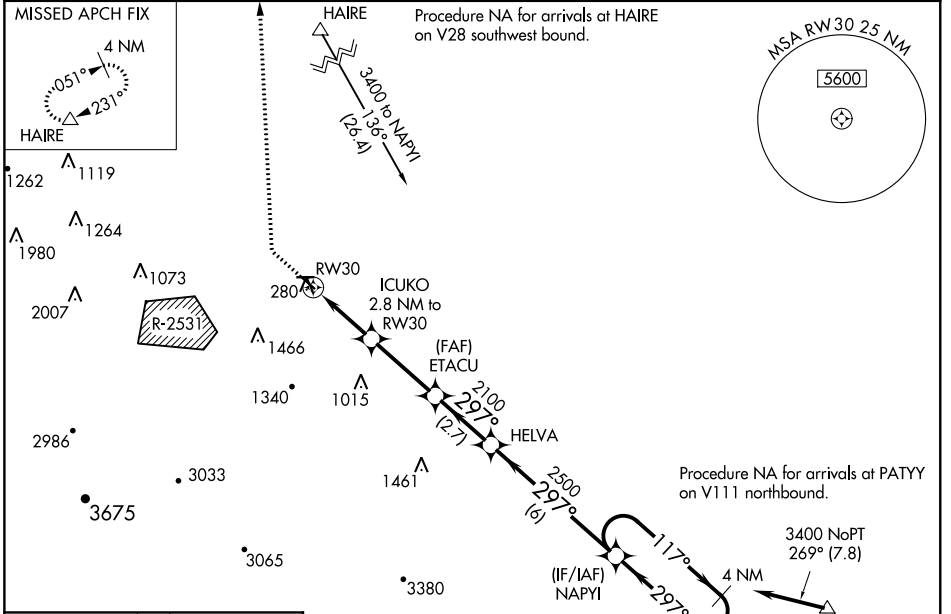
TRACY MUNI (TCY)

RNP APCH

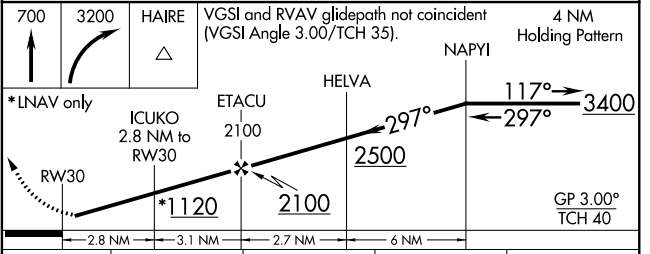
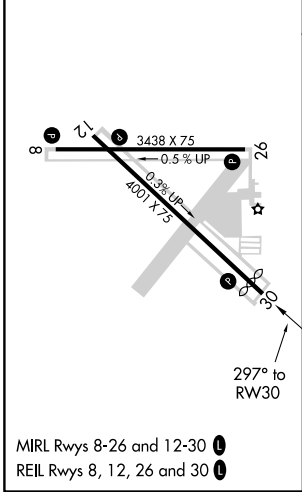
▼ Baro-VNAV NA when using Stockton altimeter setting. For uncompensated Baro-VNAV systems, LNAV/VNAV NA below -15°C or above 54°C. Circling NA southwest of Rwy 12-30. Straight-In Rwy 30 NA at night, Circling Rwy 30 NA at night. Rwy 30 helicopter visibility reduction below 1 SM NA. When local altimeter setting not received, use Stockton altimeter setting; increase all DAs to 507 feet; increase all MDAs 60 feet and visibility LNAV Cat C ½ SM.

MISSED APPROACH: Climb to 700 then climbing right turn to 3200 direct HAIRE and hold, continue climb-in-hold to 3200.

| | | |
|--------------------------|---------------------------------------|---------------------------------|
| AWOS-3 118.375 | NORCAL APP CON 123.85 278.3 | UNICOM 123.075 (CTAF) |
|--------------------------|---------------------------------------|---------------------------------|



| | |
|----------|----------|
| ELEV 193 | TDZE 193 |
|----------|----------|



| CATEGORY | A | B | C | D |
|-------------------|-------------------|-------------------|---------------------|----|
| LPV DA | | 447-1 254 (300-1) | | NA |
| LNAV/VNAV DA | | 443-1 250 (300-1) | | NA |
| LNAV MDA | | 540-1 347 (400-1) | | NA |
| C CIRCLING | 580-1 387 (400-1) | 660-1 467 (500-1) | 660-1½ 467 (500-1½) | NA |

SW-2, 25 FEB 2021 to 25 MAR 2021

SW-2, 25 FEB 2021 to 25 MAR 2021